



Dublin San Ramon  
Services District  
*Water, wastewater, recycled water*

# Regional Capital Expansion Program Update



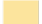




Pleasanton/DSRSD Liaison Meeting  
March 31, 2025

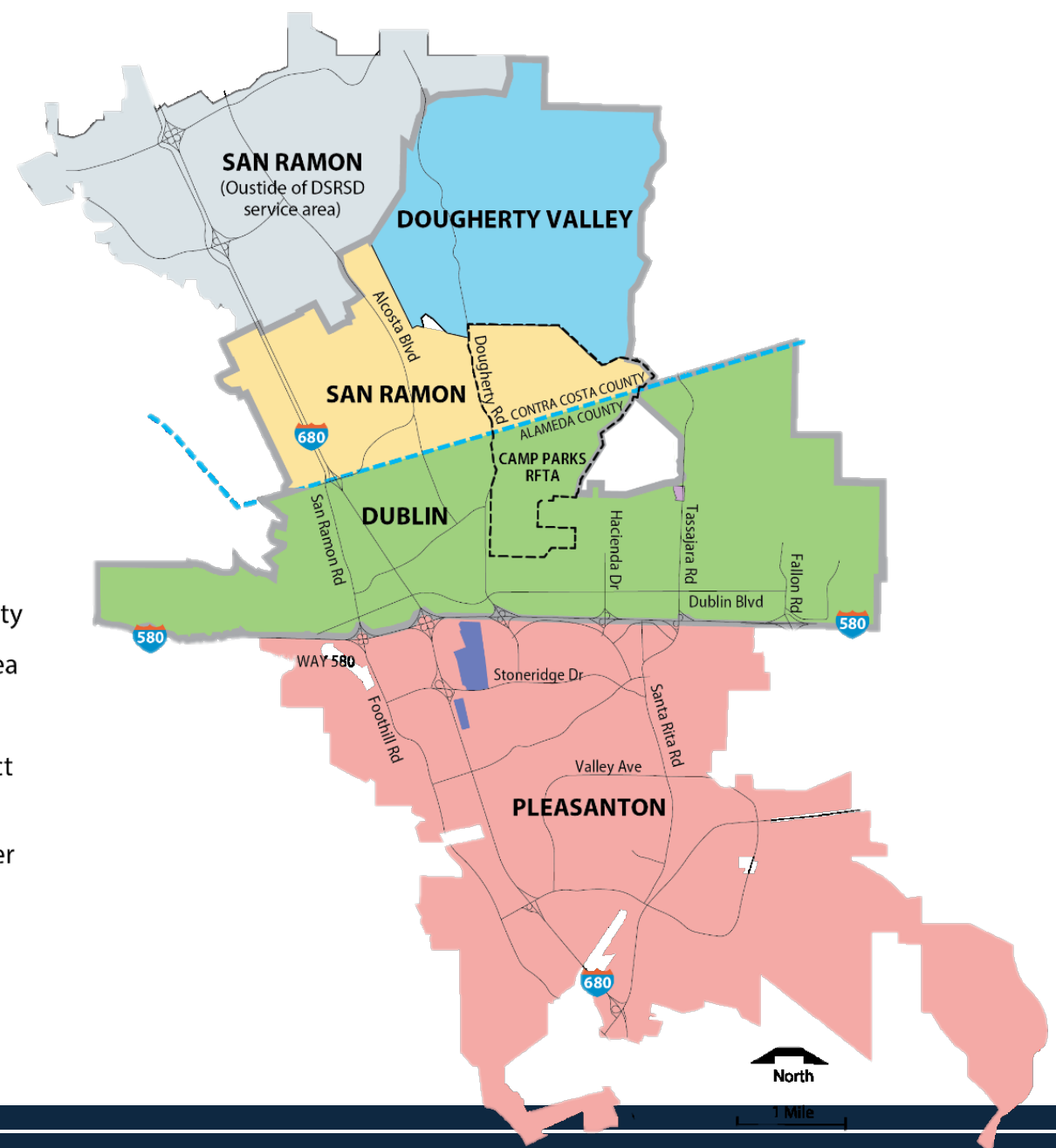
Steven Delight, Engineering Services Director



# DUBLIN SAN RAMON SERVICES DISTRICT

## Map Legend

-  DSRSD Regional Wastewater Treatment Facility
-  DSRSD Water and Recycled Water Service Area
-  DSRSD Wastewater Only Service Area
-  DSRSD Wastewater Treatment Under Contract and Recycled Water
-  DSRSD Water, Wastewater and Recycled Water Service Area
-  Alameda Contra Costa County Dividing Line
-  DSRSD Boundary
-  Camp Parks (Parks RFTA) Boundary



# Then and Now





# Then and Now



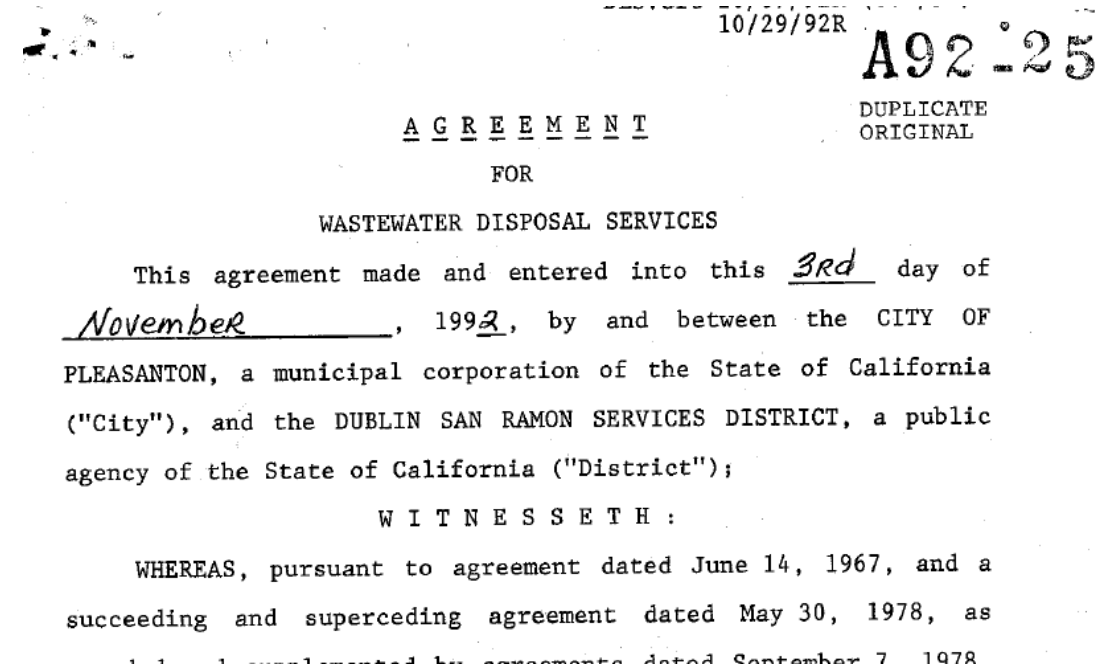
**Dublin San Ramon Services District**

*Water, wastewater, recycled water*



# 1992 AGREEMENT FOR WASTEWATER DISPOSAL SERVICES

- Provides for DSRSD to treat flows from Pleasanton
- Agency capacity ownership
- Obligation to maintain collection systems
- Payment structure for operations and maintenance
- Review of capital expansion projects





# Proposed capital expansion projects

Project	Expansion Cost	FY
Biogas Treatment System Improvements	\$ 2,154,050	26
Alum Addition	\$ 7,500	26
On-Site Solar Power, Battery Storage and Electric Vehicle Charging	\$ 24,000	26
Wastewater Treatment and Biosolids Facilities Master Plan Update	\$ 822,800	26
Food Waste Receiving Facility	\$ 4,075,000	27
Cogeneration Engine Replacement	\$ 8,850,000	26
Regional Dublin Trunk Relief Sewer	\$ 5,515,000	31
Total Expansion	\$ 21,448,350	



# Wastewater Treatment Plant

- *Solar Layout*
- \$200,000 (total project cost)
- \$48,000 Expansion
- Plan for a Power Purchase Agreement (PPA)

Parameter Type	Value
Module Count	821
System Size (kW DC)	451.6
Shading impact	Minimal
Estimated Annual Solar Generation (kWh AC)	705,900
Modeled Yield (kWh/kW)	1,536
Energy Usage Offset	18%





# Livermore-Amador Valley Water Management Agency

- *Solar Layout*
- \$200,000
- Funded by LAVWMA
- Plan for a Power Purchase Agreement (PPA)

Parameter Type	Value
Module Count	1,828
System Size (kW DC)	1,005.4
Shading impact	Minimal
Estimated Annual Solar Generation (kWh AC)	1,544,800
Modeled Yield (kWh/kW)	1,536
Energy Usage Offset	18%





# Wastewater Treatment Plant and Biosolids Master Plan Update

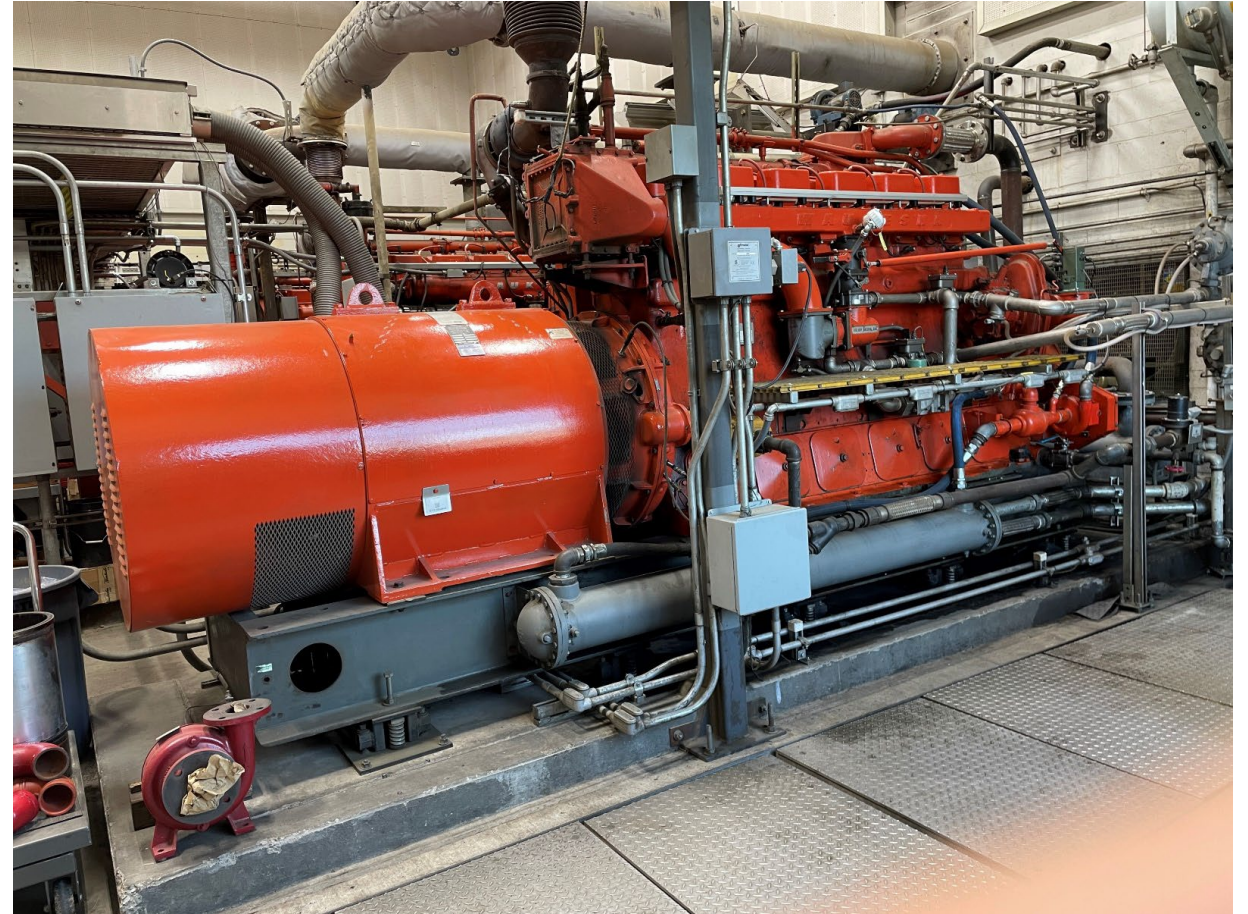
- Last updated in 2017
- Will update based on updated flow projections and effluent nutrient limits
- Will outline nutrient management strategy
- \$968,000
- Funded 85% Expansion





# Cogeneration Engine Replacement

- Cogeneration Engine Replacement (\$44.3M)
- Funded 20% Expansion
- Planned over 7 years
- Construction to start in 2031





# Next Steps

- Board Budget Workshop May 6
- Board Consider Adoption June 3







Dublin San Ramon  
Services District  
*Water, wastewater, recycled water*

# Questions?

Steven Delight,  
Engineering Services Director

[delight@dsrsd.com](mailto:delight@dsrsd.com)