

October 11, 2023

# Central San Overview and Recycled Water Updates

Central San-DSRSD Liaison Meeting

**Melody LaBella, P.E.,**  
Resource Recovery Program Manager



1

## About Central San



- Special District with a mission to collect and treat wastewater from a 146 square mile area
- 1500+-mile sewer collection system
- 53.8 million gallon per day (MGD) wastewater treatment plant in Martinez
- ~500,000 residents and ~3,000 businesses
- 2022 Average Dry Weather Flow was ~34 MGD
- Other Services
  - Household Hazardous Waste Collection Program
  - Recycled Water Program (~5%)

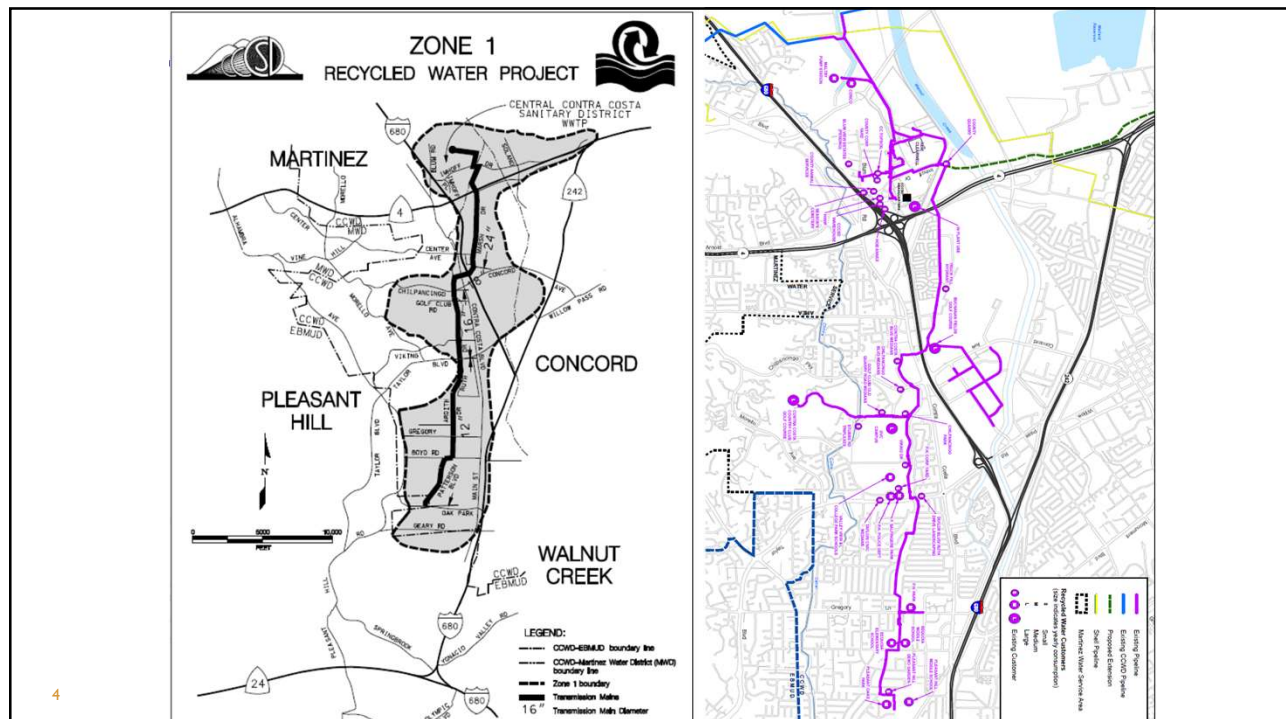
2

# Central San's Recycled Water Program



3

3



## Central San's Recycled Water Program

- Central San's wastewater treatment plant is the biggest recycled water user
- Offsite distribution started in 1998
- Primarily landscape irrigation
- 15 miles of purple pipelines that serve 53 metered connections



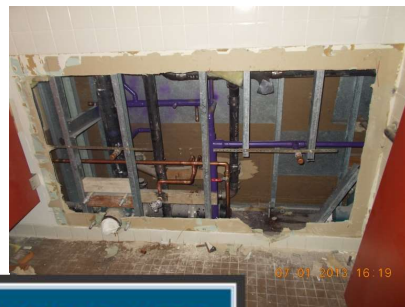
5

5

## Toilet & Urinal Flushing



Central Contra Costa  
Sanitary District



6

6



## Commercial Truck Fill Program

- Provides recycled water to licensed contractors for construction activities such as dust control, soil compaction, and plant establishment.
- Contractors can access recycled water via purple fire hydrants or from Central San's Commercial Fill Station.
- The first 100,000 gallons of recycled water is free of charge.



One of Central San's three hydrants (left) and a portable meter (middle) that contractors can use to obtain Central San's recycled water. Central San's Fill Station (right).

7

7

## Residential Fill Station



The Residential Fill Station Program allows central Contra Costa County residents to pick up recycled water free of charge at our HHW facility in Martinez for hand-watering lawns, landscaping and gardens.

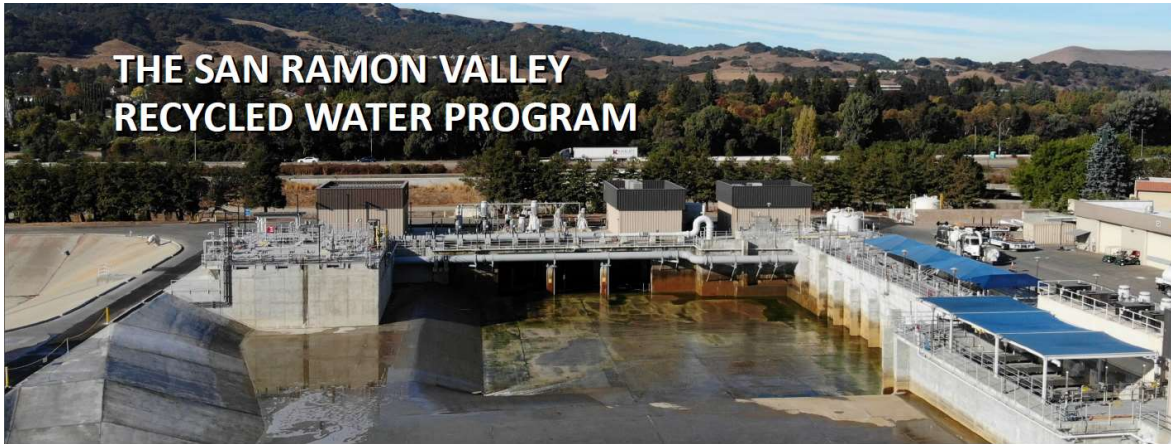
### How to use this program:

- Complete an Application/Use Agreement and a brief training class on the proper use of recycled water
- Brings containers with watertight lids; 1 gallon minimum to 300 gallon maximum
- Use appropriately-sized containers and vehicles for transport (water is heavy!)
- Unlimited trips allowed

8

8

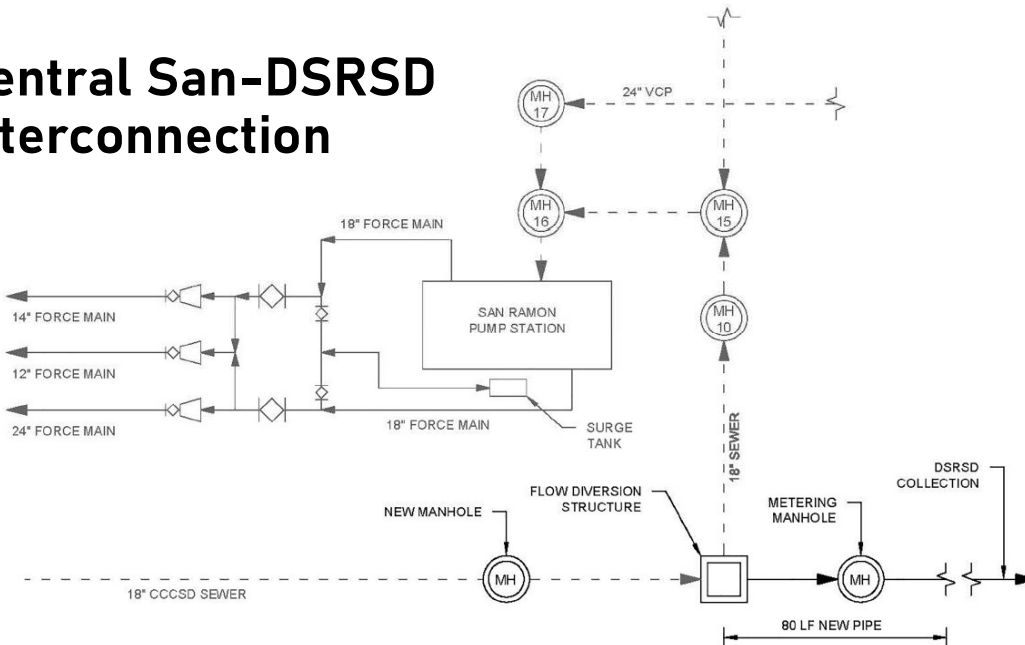
## Temporary Wastewater Diversion Project



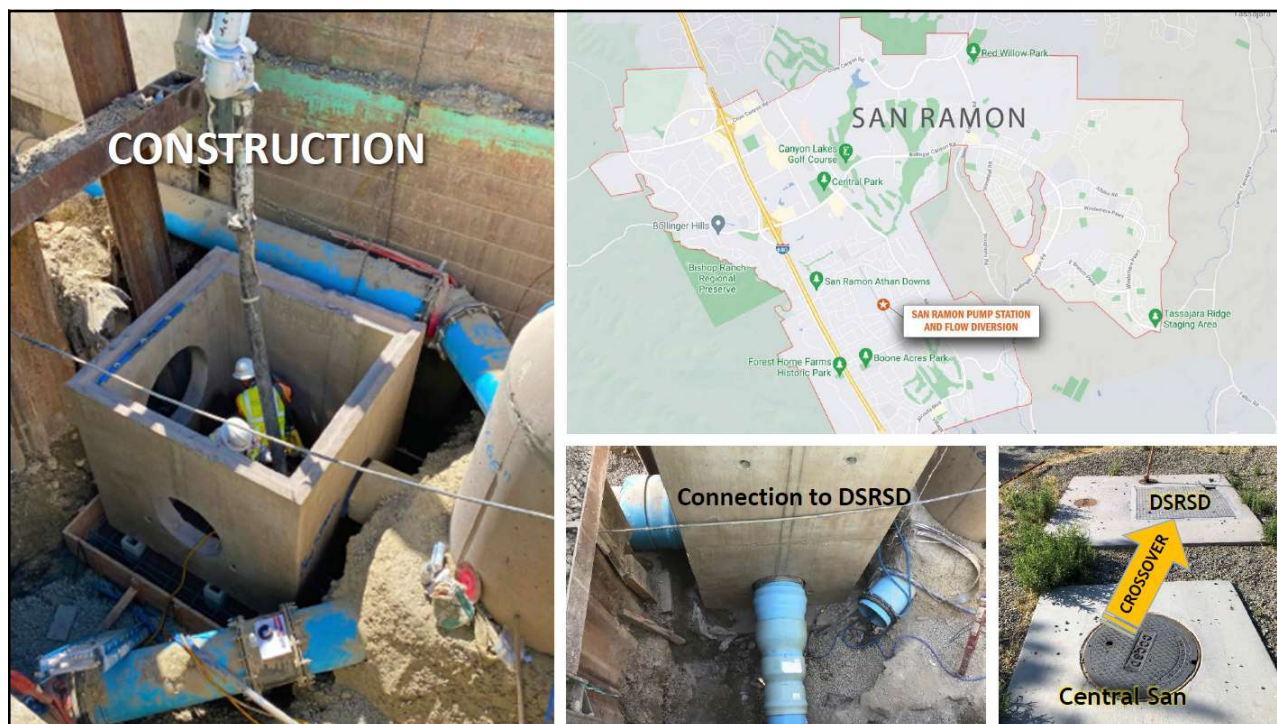
9

9

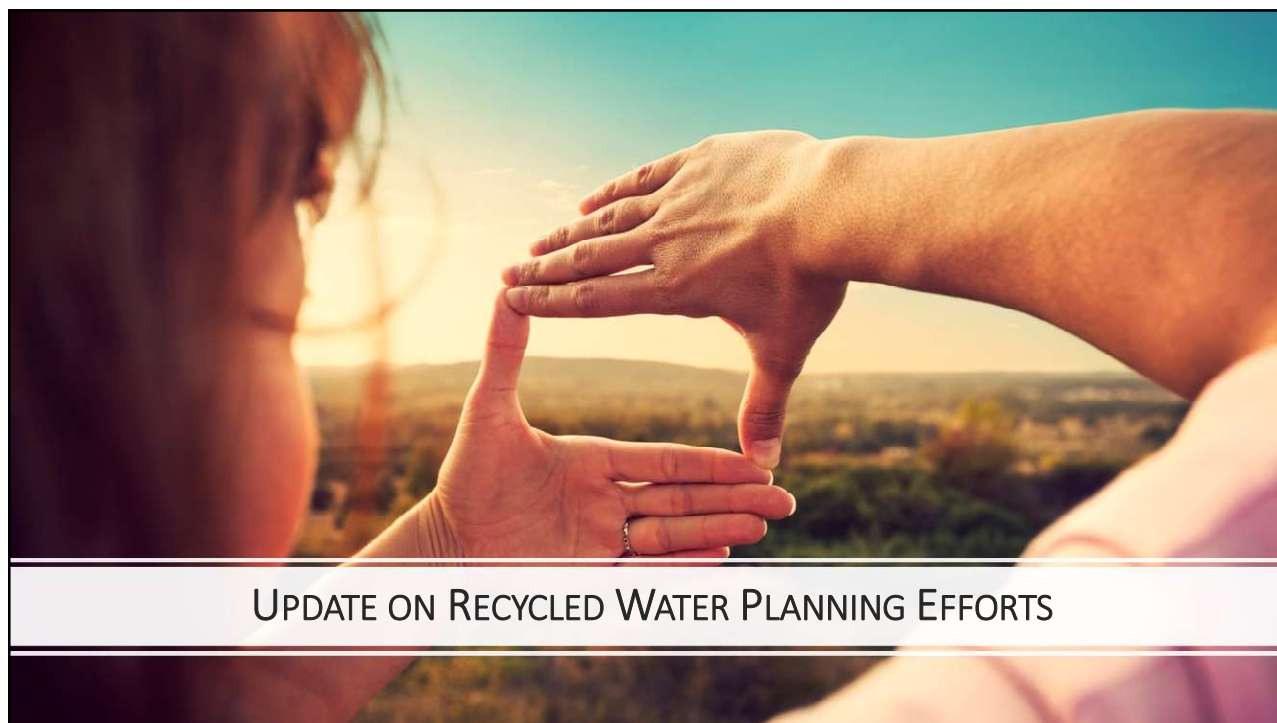
## Central San-DSRSD Interconnection



10



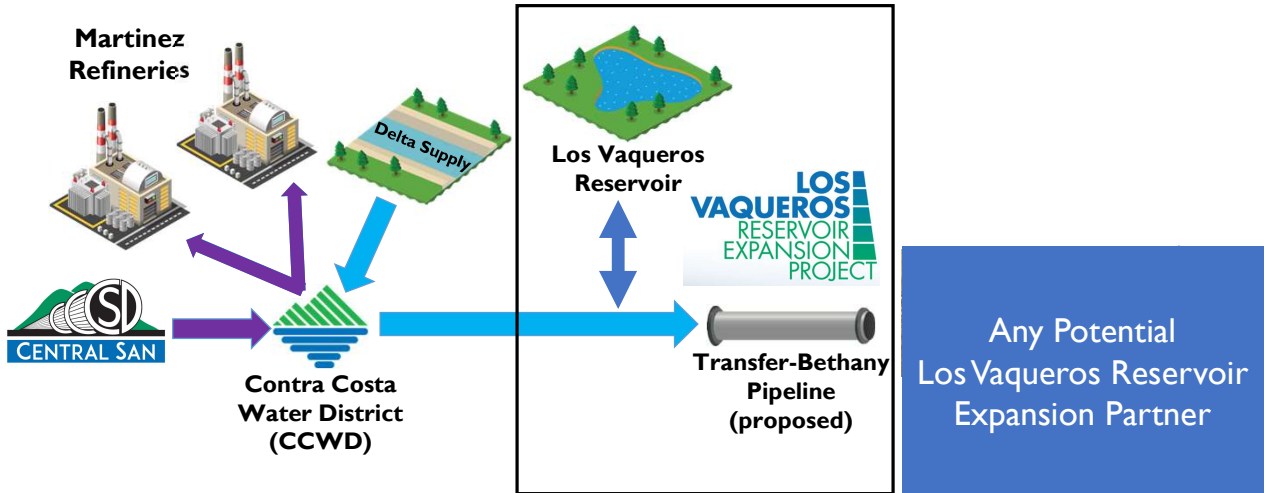
11



12



## Refinery Recycled Water Exchange Project Concept



13

13

## Memorandum of Understanding with EBMUD

- Evaluating the feasibility of a range of potential recycled water project concepts from expanded raw wastewater diversion to potable reuse.

### MEMORANDUM OF UNDERSTANDING BETWEEN CENTRAL CONTRA COSTA SANITARY DISTRICT AND EAST BAY MUNICIPAL UTILITY DISTRICT FOR A FEASIBILITY EVALUATION OF RECYCLED WATER PROJECT CONCEPTS

This Memorandum of Understanding (MOU) is made and entered into this 27<sup>th</sup> day of October, 2022 by and between Central Contra Costa Sanitary District (Central San) and East Bay Municipal Utility District (EBMUD) for the purposes described herein. Each agency hereinafter may be referred to individually as "Party" or collectively as "Parties."

#### Recitals

WHEREAS, California is impacted by droughts and climate change which have highlighted the importance of building a resilient, sustainable, and diverse water resources strategy; and

WHEREAS, the Parties hereto believe that it is sound public policy and good operational practice to develop recycled water resources through financially and environmentally sound projects; and

WHEREAS, the Parties desire to enter into a MOU to collaborate for purposes of exploring the feasibility of expanding the beneficial use of recycled water by maximizing and optimizing local benefits within the Parties' service areas, thereby promoting the conservation of potable water resources and reducing nutrient loadings to the Bay by reducing wastewater discharges to the Bay; and

WHEREAS, the Parties intend that participation in this MOU be entirely voluntary, and that either Party may elect to withdraw from the MOU at any time and for any reason; and

WHEREAS, the Parties hereto may later explore the feasibility of establishing a more formal understanding or agreement, if deemed mutually agreeable and beneficial to the development of recycled water projects between the Parties; and

WHEREAS, it is an EBMUD strategic goal to identify, evaluate and implement new opportunities for recycled water, including potential for potable reuse; and

WHEREAS, Central San produces and distributes recycled water to a small area near its treatment plant, known as "Zone 1," within the Contra Costa Water District (CCWD) service area, and has been seeking water agency partners to leverage Central San's potential supply of recycled water to augment the region's water supply; and

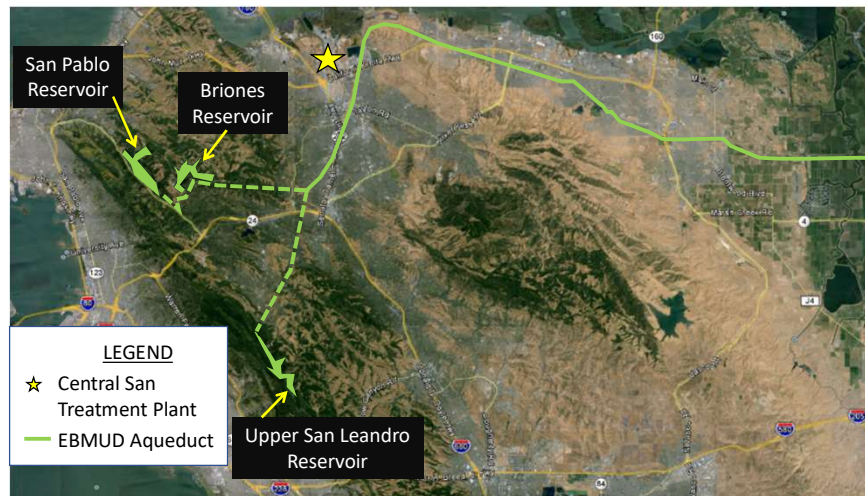
WHEREAS, Central San and EBMUD have collaborated on evaluations of potential non-potable recycled water projects in the past, including the Lamorinda Project and several Satellite Water Recycling Facility Projects, which have resulted in MOUs between both Parties with Diablo Country Club, Moraga Country Club, and most recently, interest in an MOU by the Rossmoor Community; and

WHEREAS, EBMUD is a member of the Bay Area Regional Reliability Partnership, which is working to develop regional solutions to enhance water supply reliability, leverage existing

14

14

## Potential for Potable Reuse with EBMUD



15

15

Questions?



16