



Dublin San Ramon
Services District

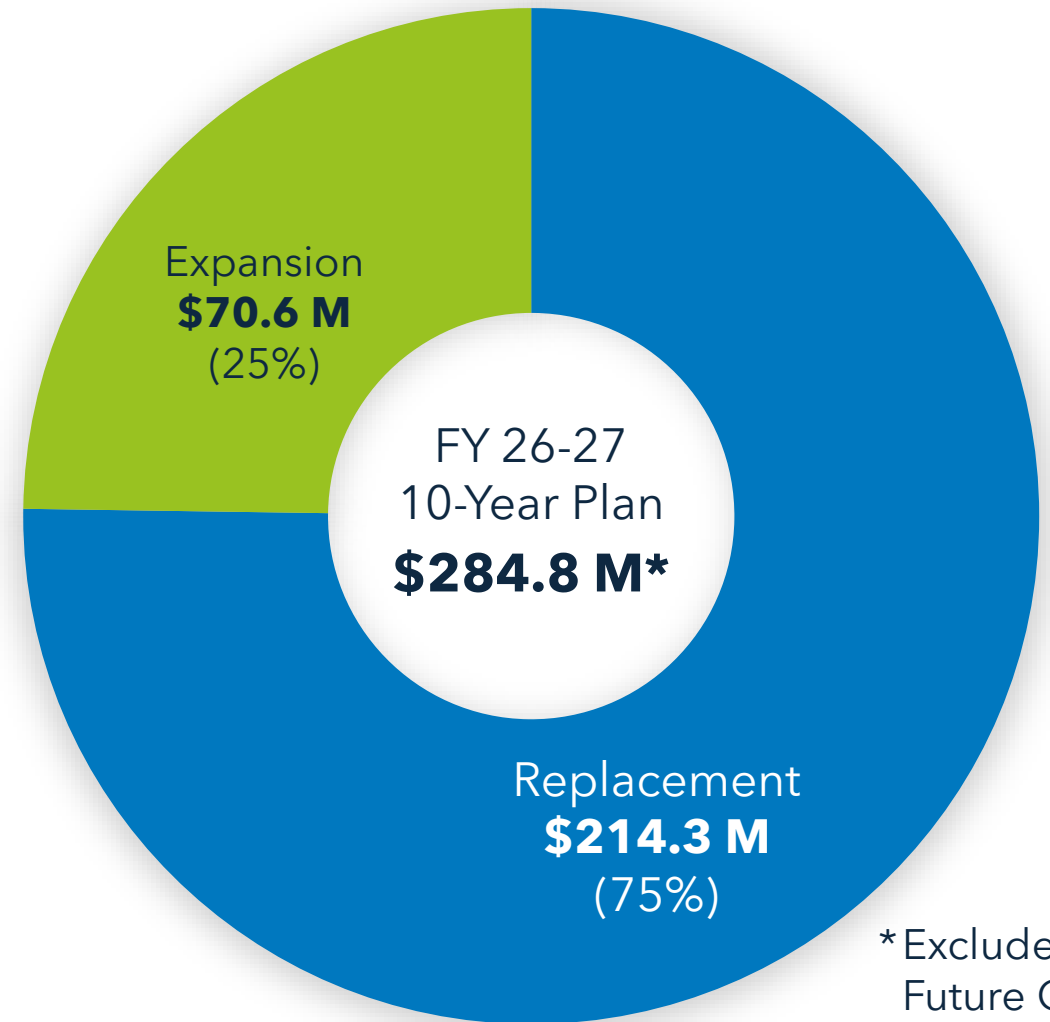
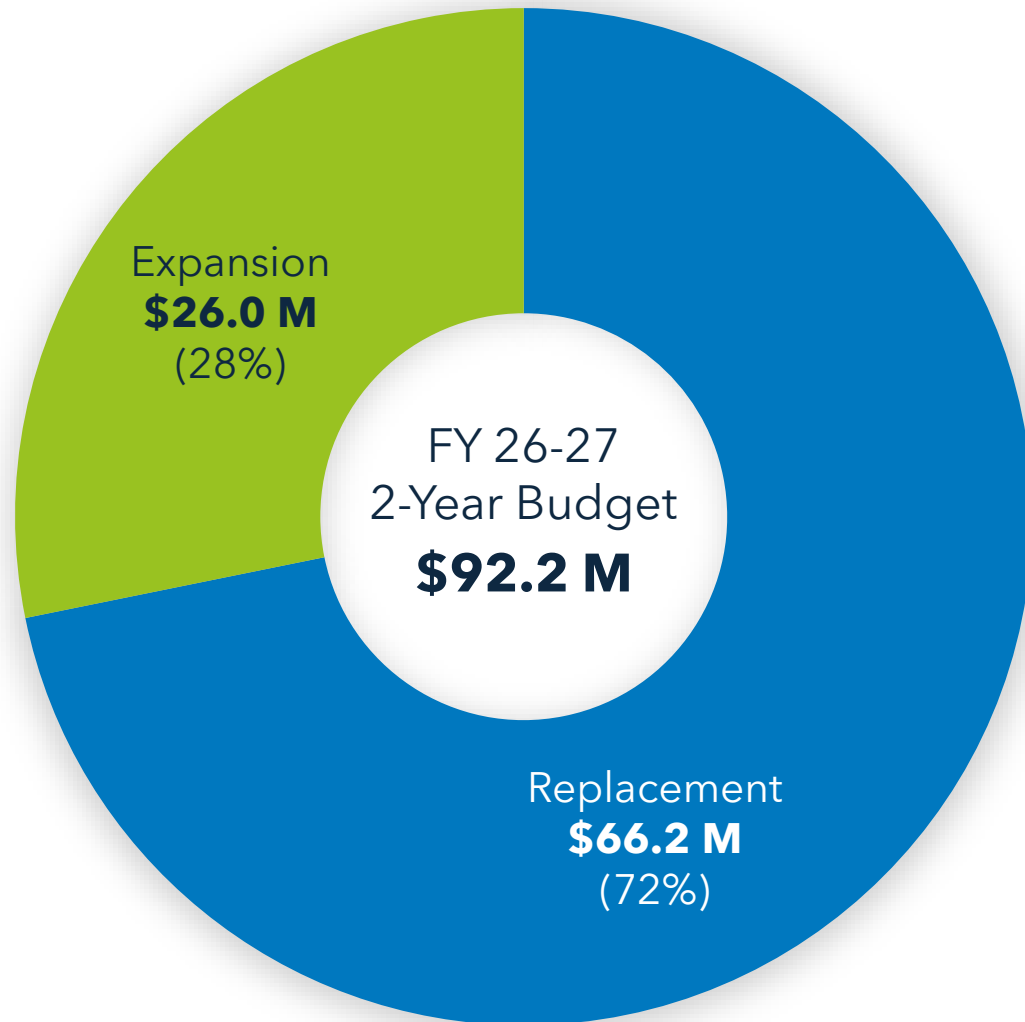
Water, wastewater, recycled water

DSRSD Capital Project Update

Dublin/DSRSD Liaison Meeting
June 23, 2025

Steven Delight, Engineering Director

Expenditures - By Type



*Excludes Future Costs



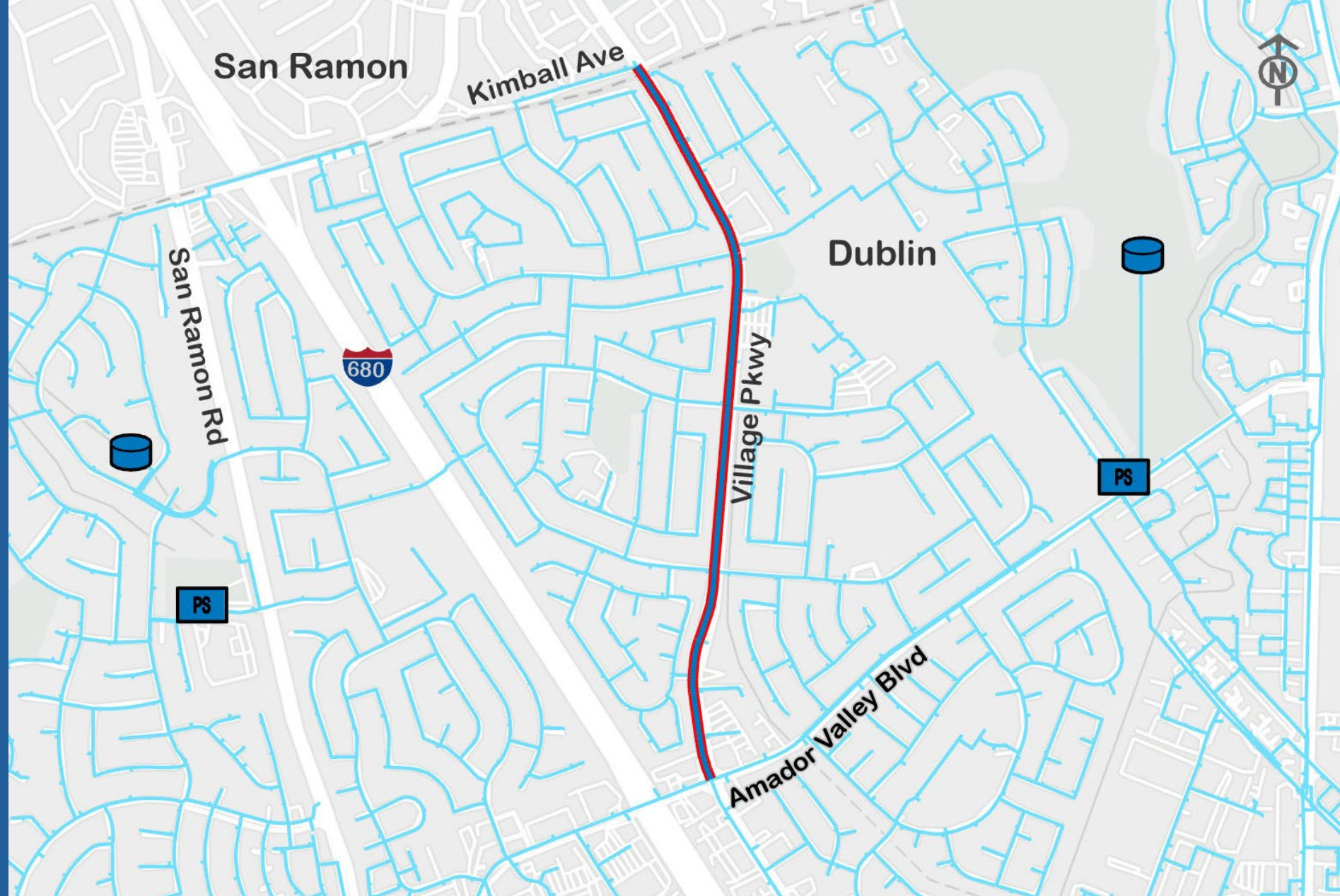


Village Parkway Main Replacement – Amador Valley Boulevard to Kimball Avenue

CIP 24-W013

Proposed Budget:
\$7,415,000

Fund 610



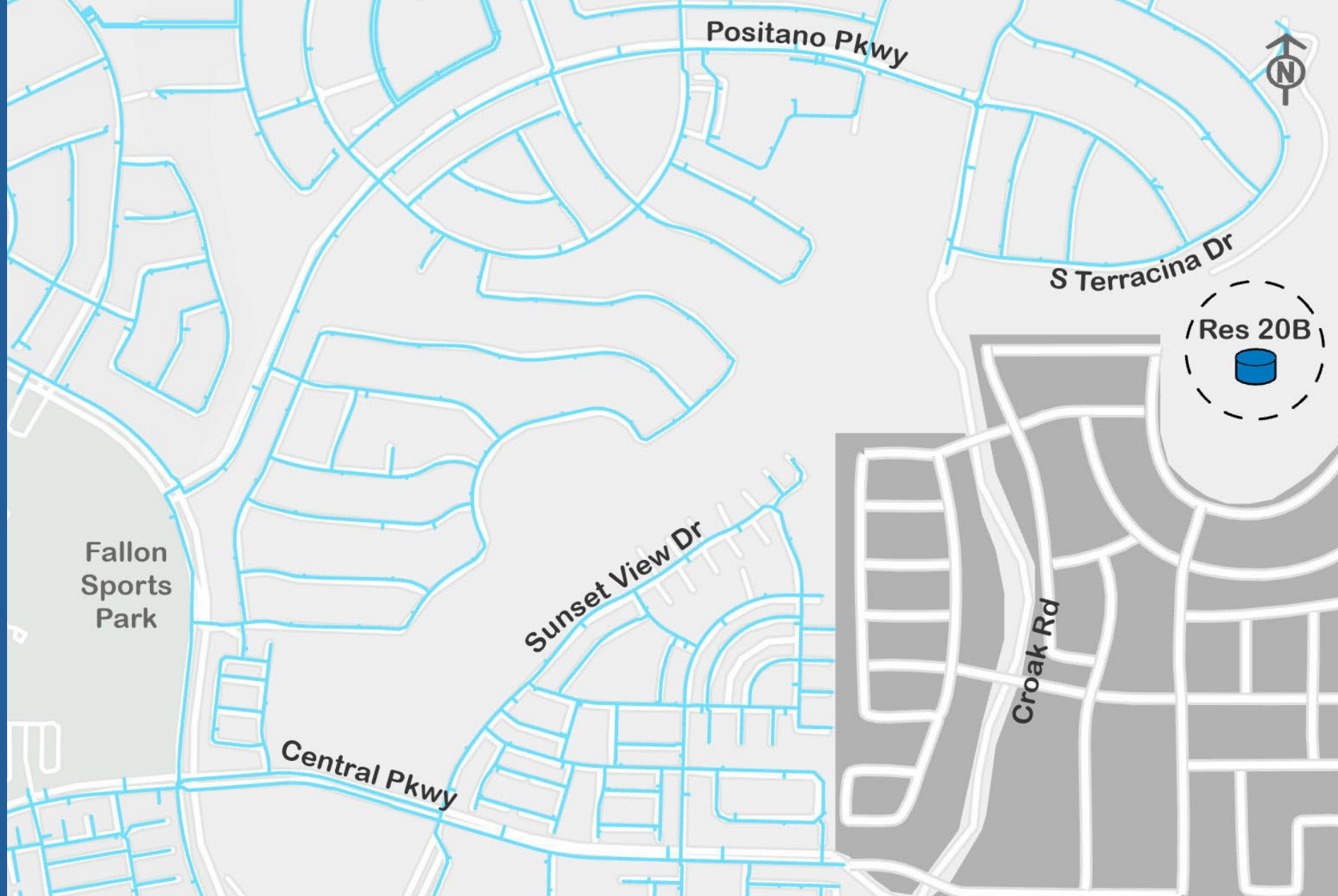


Reservoir 20B

CIP 14-W008

Proposed Budget:
\$9,500,000

Fund 620



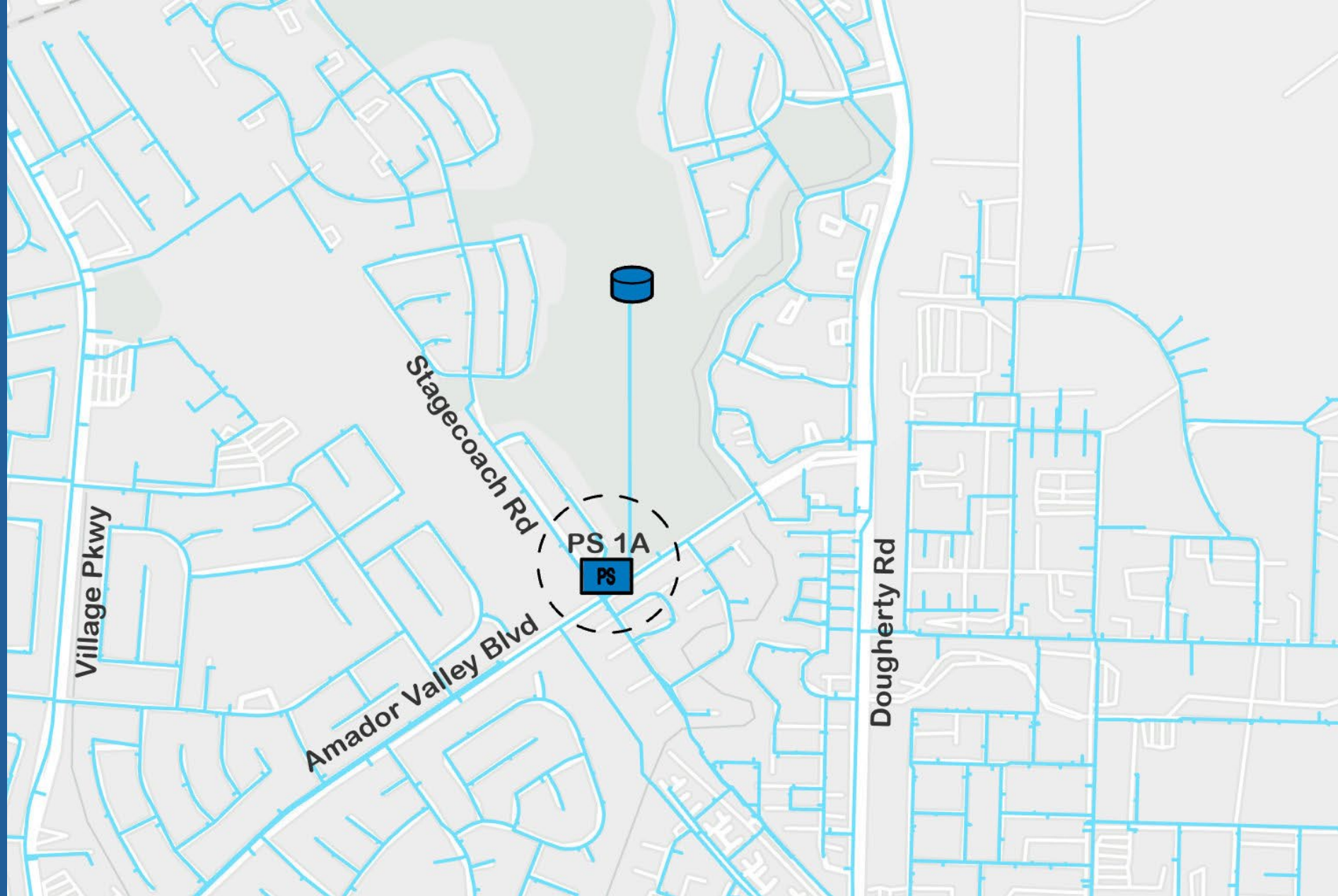


Pump Station 1A Rehabilitation

CIP 20-W025

Proposed Budget:
\$9,330,000

Fund 610



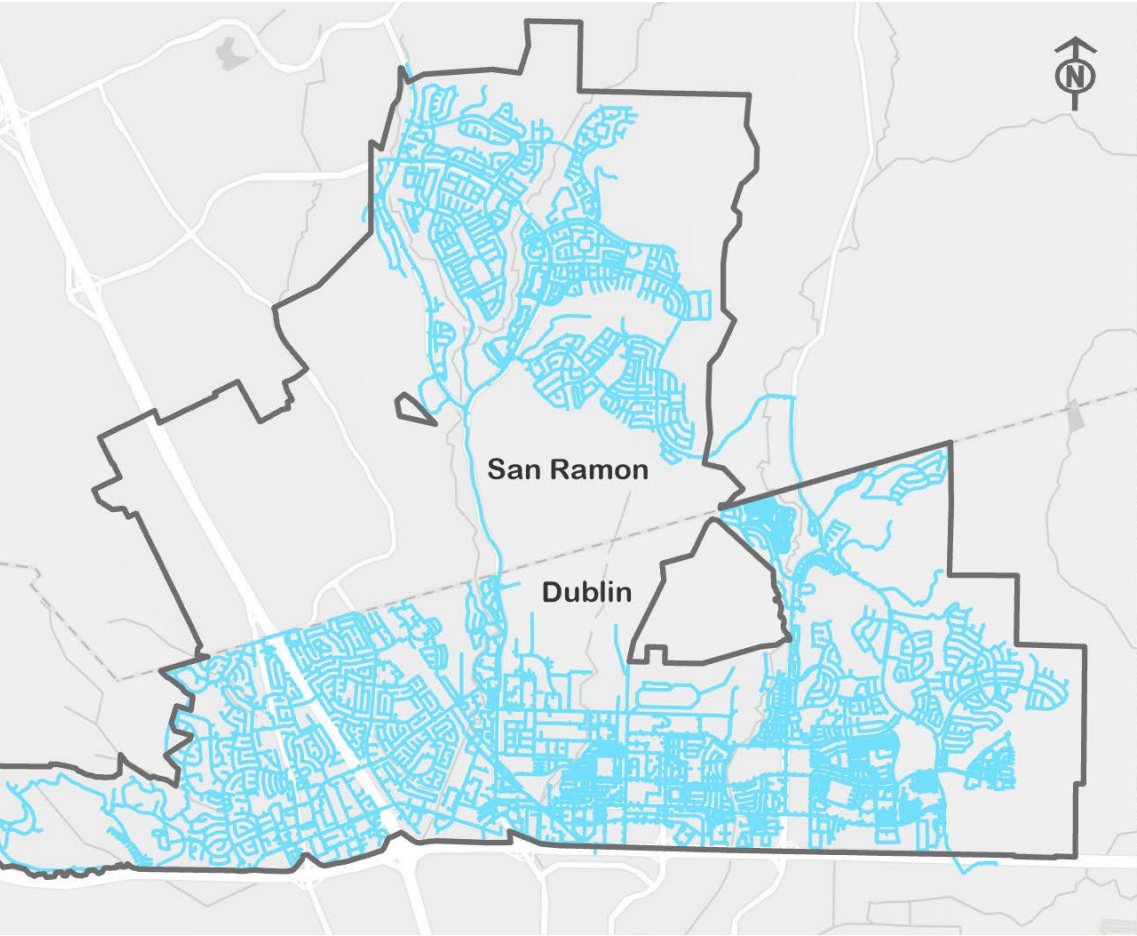


Valve & Blow-Off Replacement

CIP 26-W008

Proposed Budget:
\$4,800,000

Fund 610





Sewer Collection System Spot Repairs

CIP 22-S008

Proposed Budget:
\$1,795,000

Fund 210





Cogeneration Engine Replacement

CIP 26-P015

Proposed Budget:
\$44,250,000

Fund 310,320





**Dublin San Ramon
Services District**

Water, wastewater, recycled water

Questions?



DSRSD Wildfire Preparedness

Dublin/DSRSD Liaison Meeting
June 23, 2025



**Dublin San Ramon
Services District**
Water, wastewater, recycled water

Michelle Gallardo, Administrative Services Director

DSRSD: Response Levels

DSRSD follows the State Emergency Management System (SEMS) for emergency response:

LEVEL	RESPONSE	AGENCIES
EAL-1	State and Regional	<ul style="list-style-type: none">• Federal Emergency Management Agency• California Office of Emergency Services (CalOES)
EAL-2	Operational Area	<ul style="list-style-type: none">• Alameda County Office of Emergency Services• Contra Costa County Office of Emergency Services
EAL-3	Local Government	<ul style="list-style-type: none">• Cities of Dublin, Pleasanton, San Ramon• County Services, Local Fire, Police, Medical• Joint-Powers Authority Partners
EAL-4	Field Response	<ul style="list-style-type: none">• DSRSD, Contractors as needed

Inter-agency Coordination

DSRSD Emergency Operations Center (EOC)	<i>District Office</i>
Alameda County Office of Emergency Services	<i>County OES/EOC, Dublin, CA</i>
Alameda County Emergency Managers Association (ALCO-EMA)	<i>Coordinating agencies and local partners</i>
Tri-Valley Emergency Management Consortium	<i>Tri-Valley cities and special districts</i>
PG&E Portal	<i>PG&E</i>



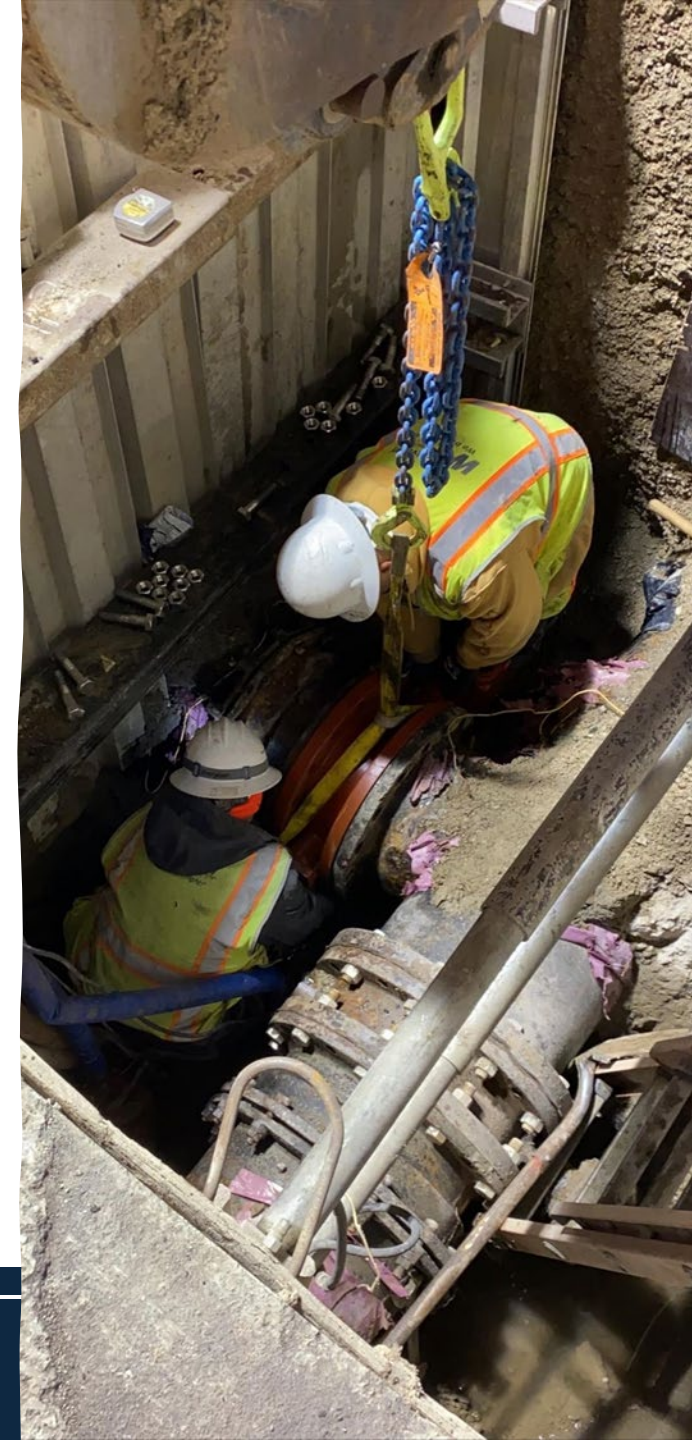
DSRSD Fire Preparedness Operations & Maintenance

Fuel Management:

- Fire departments inspect for vegetation management
- Contracts for mowing, weed abatement

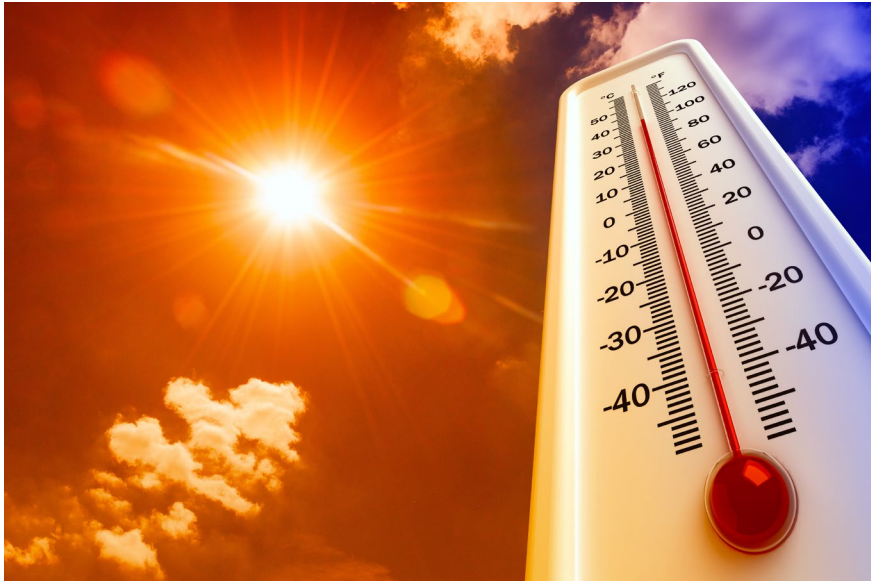
Facilities and infrastructure:

- Water distribution system preventative maintenance:
 - Inspect and operate fire hydrants to verify full functionality
 - Flush potable dead-end pipes to remove sediment and improve water quality
 - Exercise valves to be sure they are ready to work in an emergency



DSRSD Fire Preparedness

Extreme Heat and Public Safety Power Shut-Offs



- Maintain storage volume to meet customer demands and fire season
- Monitoring weather conditions
- **Frequent communication** with District's water supplier, Zone 7 Water Agency, for emergency repair coordination





FOF
Generator



BACK-UP
GENERATORS ARE
AVAILABLE IN CASE
OF POWER
OUTAGES



Gasoline Contracts & Supply

- Emergency gasoline supply contract with one vendor, line of credit with another
- Access to gasoline at Alameda County Corp Yard
- Onsite storage of gasoline (1,000 gallons at WWTP)
- Fleet can deliver up to 100 gallons to remote sites



Staff Training & Exercises

- **Functional and EOC Training Exercises** (DSRSD and Dublin last held joint exercise in December 2023)
- **FEMA Trainings**
- **Emergency evacuation drills**
- **Veoci** (Alameda County's online mutual aid and information system)
- **Personal Emergency Preparedness Training**



Lessons Learned

I-580/Eden Canyon Schaefer Ranch



- Fire reported on August 15, 2022, 4:21 PM
- Vegetation Fire near Schaefer Ranch Community
- DSRSD Zone 4 area
- DSRSD staff dispatched to the scene



Response Level: Local Government

- Alameda County Fire dispatch contacts DSRSD's On-Call Water/Wastewater Systems Field Operator
- DSRSD works to determine pressure zone the fire is in, turn on pumps to assist with pressure
- Minimum storage at any given time is approximately 50% of full capacity for emergency purposes
- Pump stations work to pump water to the reservoirs





Questions?



**Dublin San Ramon
Services District**

Water, wastewater, recycled water

Michelle Gallardo, Administrative Services Director