

# Item 4.A

## Development Projects Update

June 23, 2025





# Development Projects





# Grace Pointe (Sunflower Hill)

---

- In Review (SDR)
- 60 Units
- Extremely Low and Low Income
- Persons with Intellectual and Developmental Disabilities



# Grace Pointe (Sunflower Hill)





# Francis Ranch/Sunflower Hill

---

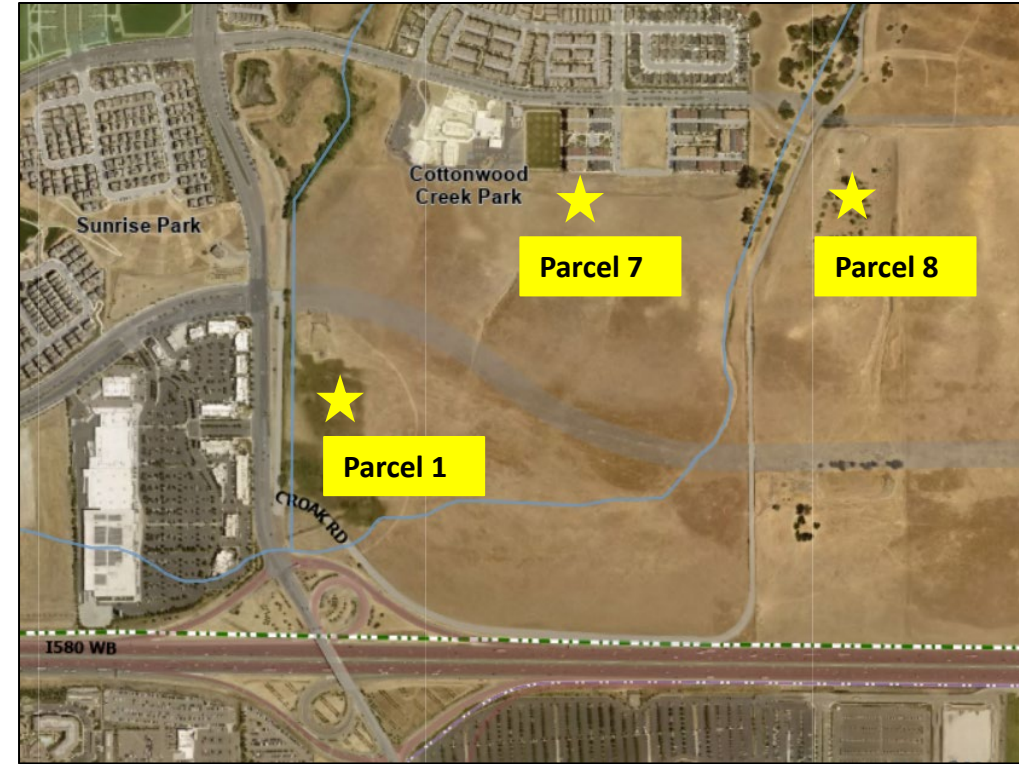
- Future Project (SDR)
- 1.8-acre site
- 77 Units
- Very Low and Low Income
- Intellectual and Developmentally Disabled





# Dublin Fallon 580 (GH PacVest)

- In Review
- Parcel 7
  - 128 three-story townhomes
- Parcel 8
  - 110 three-story townhomes
- Parcel 1 (Pre-Application)
- 10,178 square-foot commercial/retail



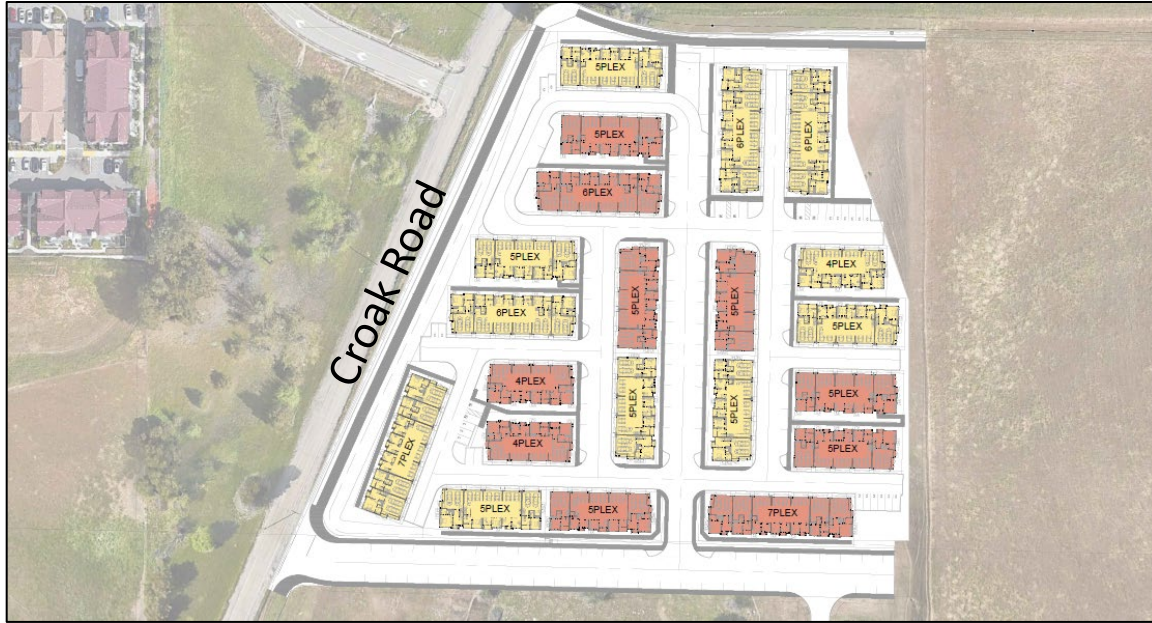


# Dublin Fallon 580 – Parcel 7

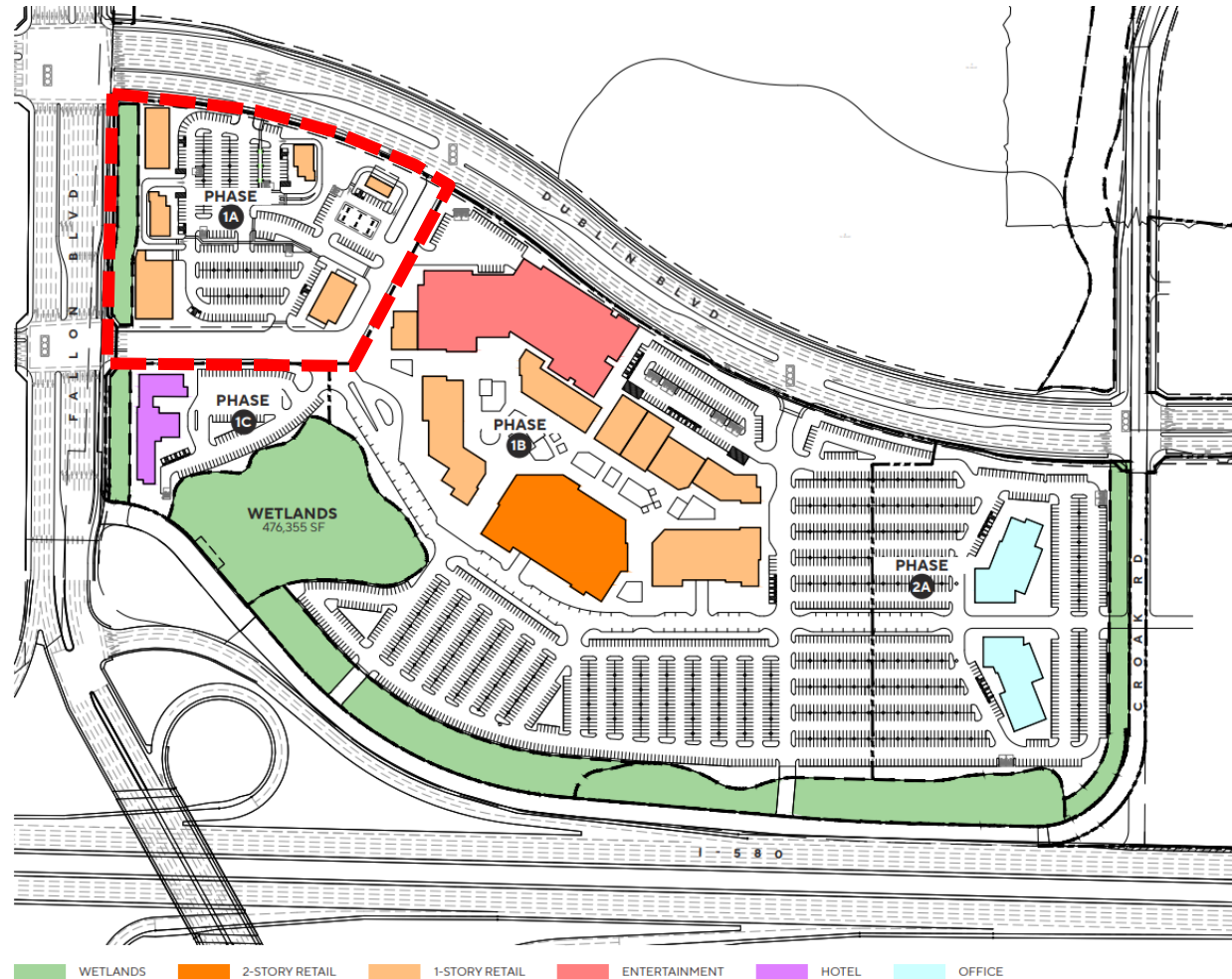




# Dublin Fallon 580 – Parcel 8



# Dublin Fallon 580 – Parcel 1





# Tru & Element Hotels

---

- In Review (SDR & Tentative Map)
- Two four-story hotels
  - 123 and 114 hotel rooms
- 10,178 square-foot restaurant/retail building



# Tru & Element Hotels







# Item 4.B

## City Capital Projects Update

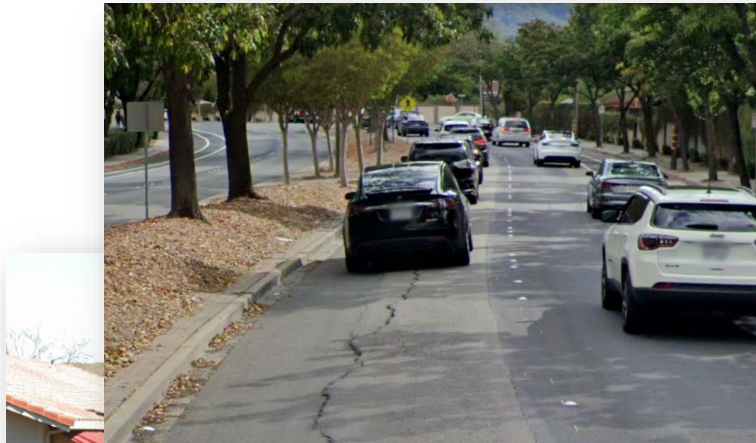
June 23, 2025





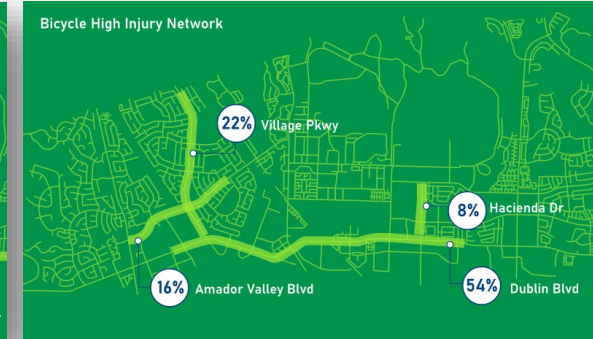
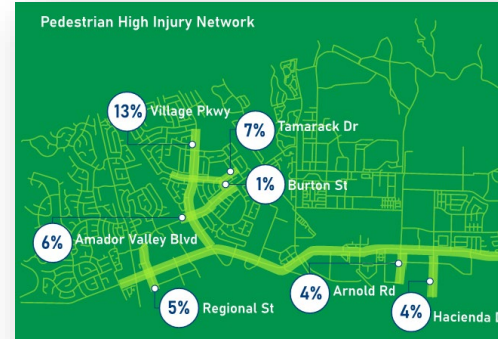
# Village Parkway Complete Streets

## 1 - Improve Pavement

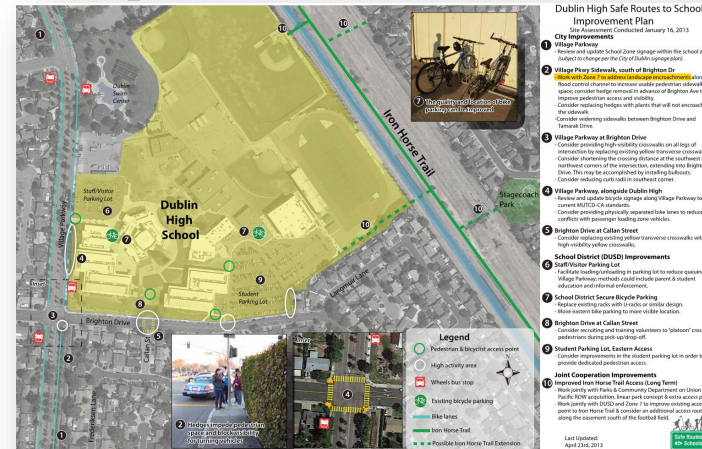


Rideability and  
Walkability

## 2 - Improve Safety for All Users



## 3 - Improve School Access



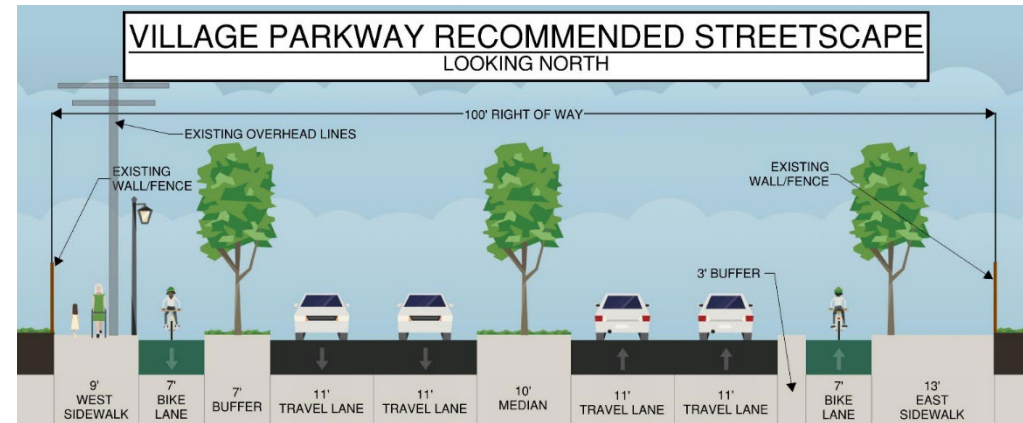
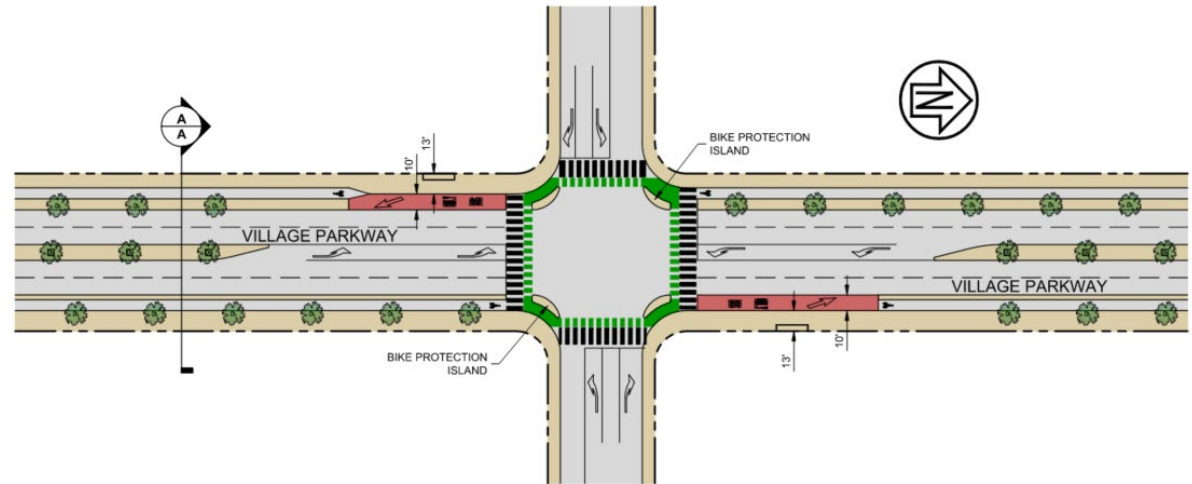
Transit Enhancements

## 4 - Support Downtown Specific Plan





# Village Parkway Complete Streets



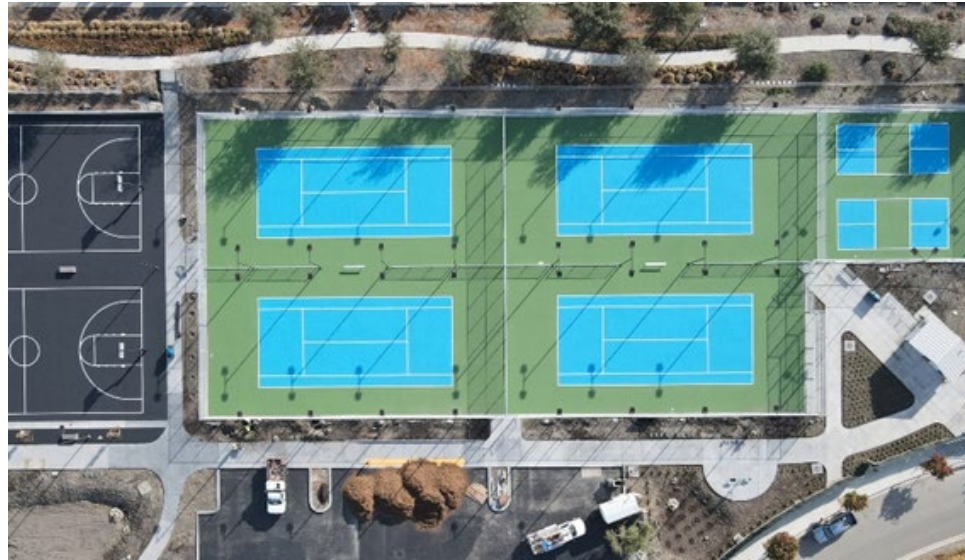


# Forest Park Neighborhood Square





# Wallis Ranch Community Park



DUBLIN  
CALIFORNIA

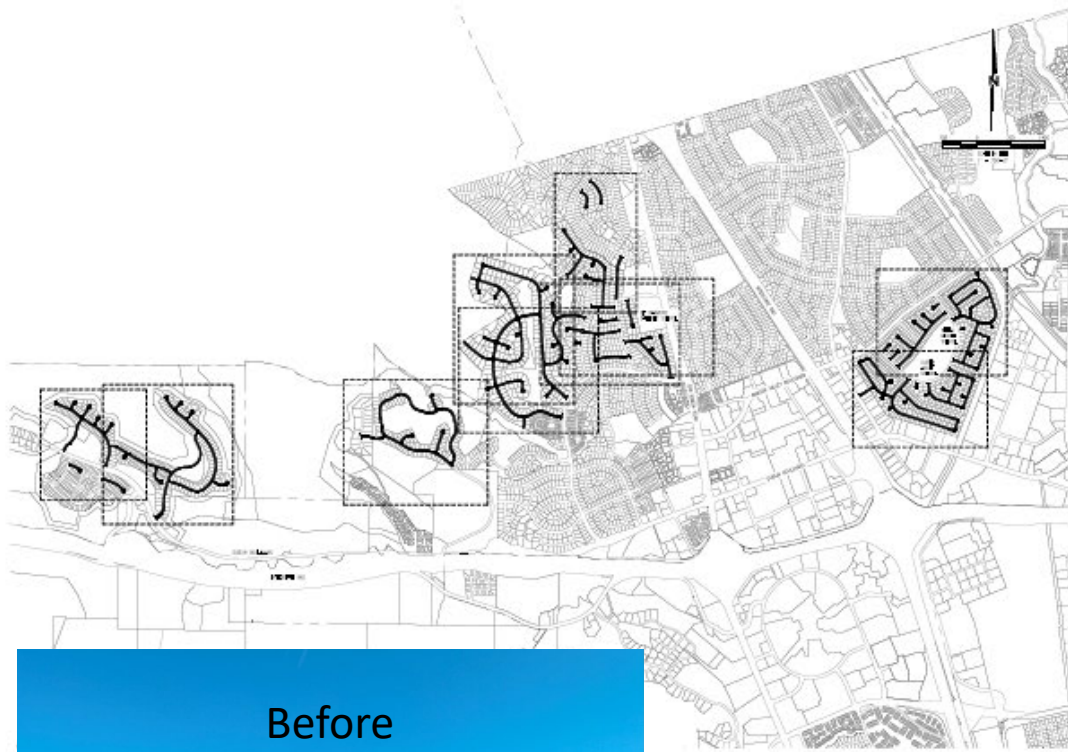


# Iron Horse Nature Park & Open Space Phase I and Green Stormwater Infrastructure Projects





# Annual Street Resurfacing



<https://www.dublin.ca.gov/2839/Slurry-Seal-2025>



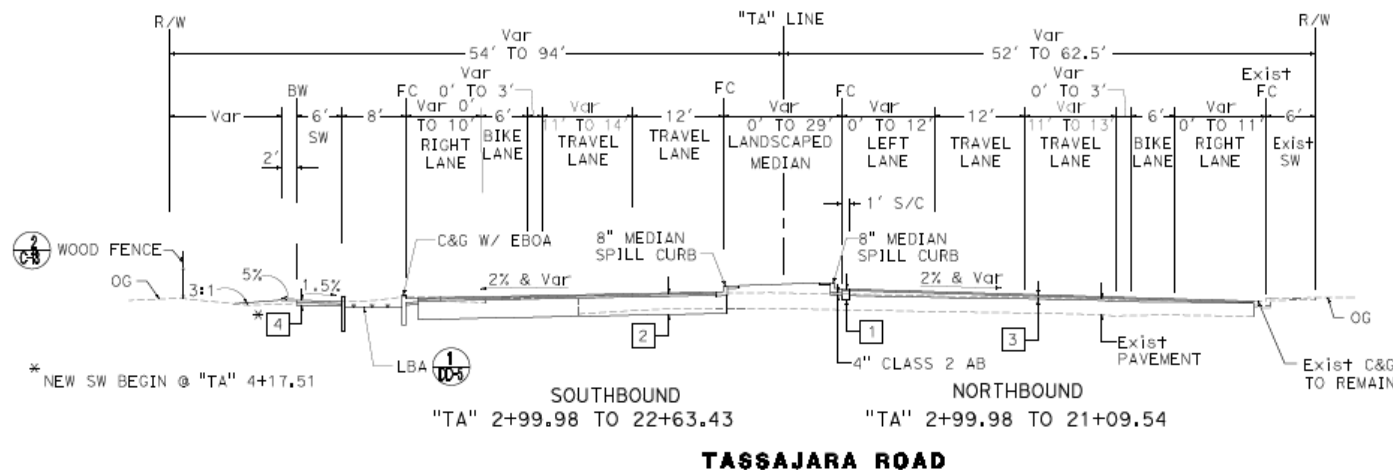
DUBLIN  
CALIFORNIA



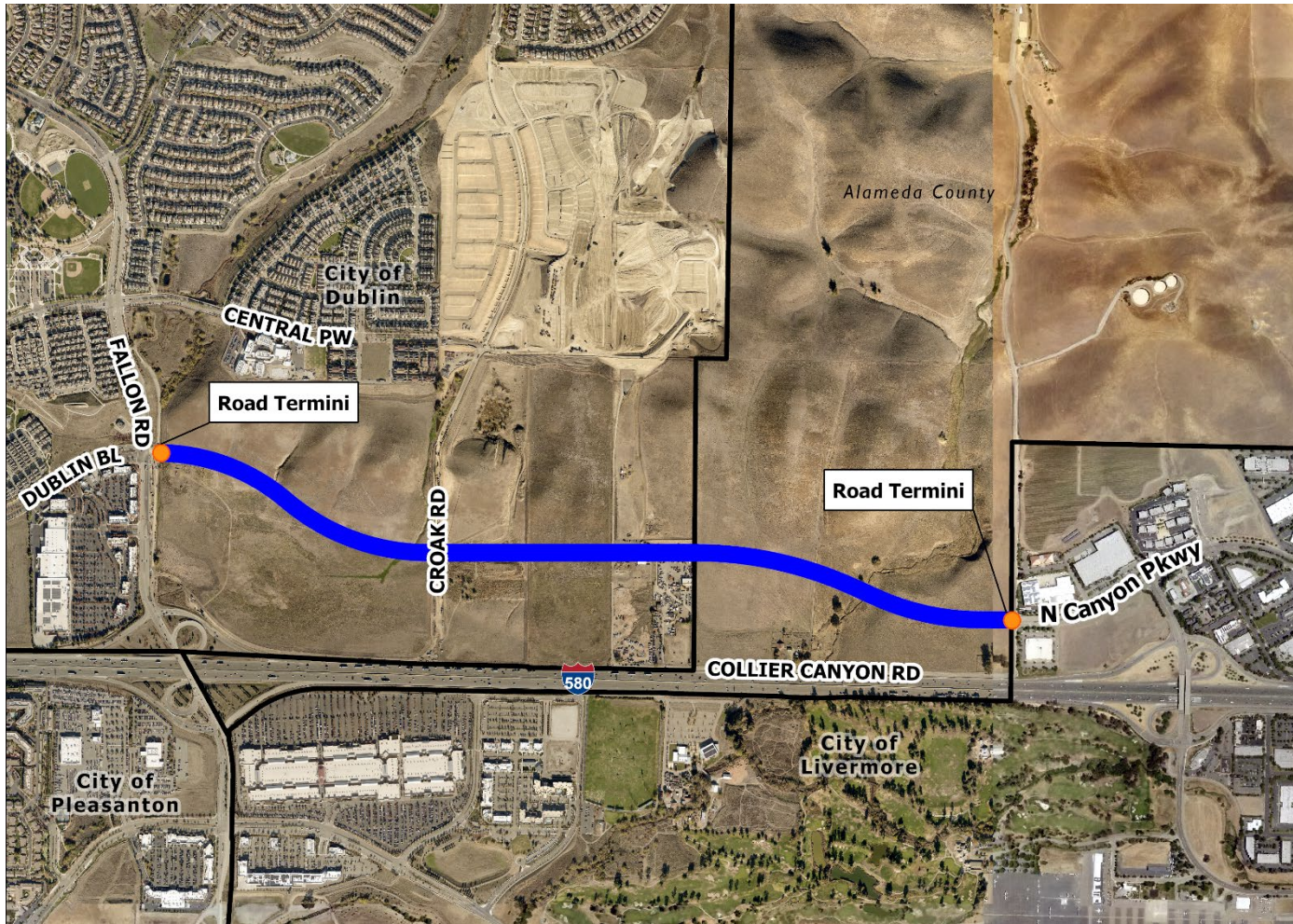
# Tassajara Road Improvements - North Dublin Ranch Drive to Quarry Lane School



- 0.6-mile length of roadway
- Conform to existing improvements
- 2 lanes in each direction
- Bike Lanes
- Sidewalk
- Landscaping / Bio Retention
- Street Lighting
- Utilities



# Dublin Boulevard Extension



- 1.5 Mile Extension
- 6 lanes in Dublin
- 4 lanes in Livermore
- Bus Turnouts
- Landscaped Median Islands
- Class IV Bikeways
- Shared use Path
- Sidewalk & Landscaping
- Street Lighting





# Kolb Park Renovation

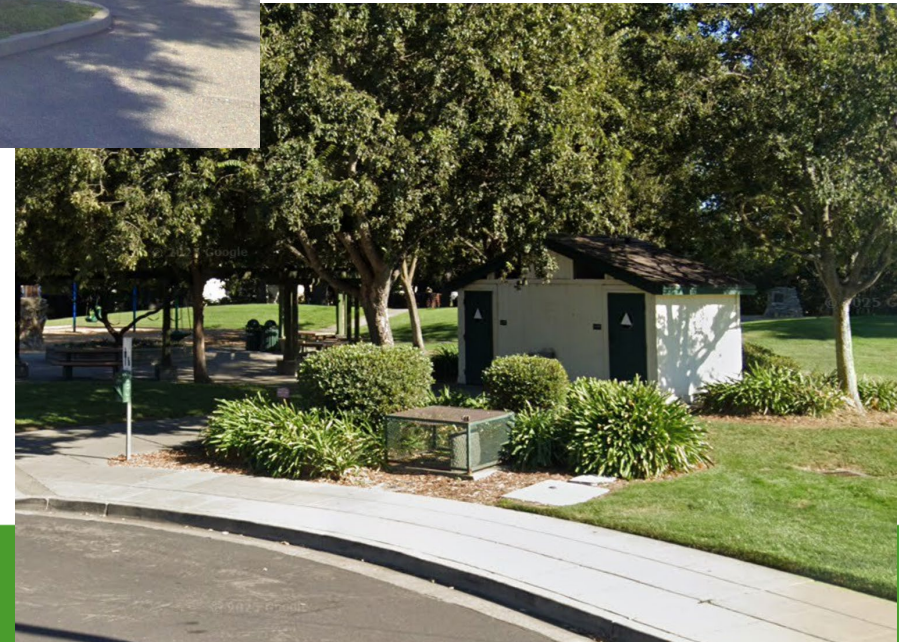
- Restroom replacement
- Evaluate and prioritize the remaining park infrastructure and amenities to be replaced





# Park Restroom Replacement

- Restroom replacement
  - Kolb Park
  - Alamo Creek Park
  - Mape Memorial Park





# 2022/2023 Storm Damage Repair Projects



New Years Eve  
2022 2:37pm



Typical Day





# Current Status of Repair

1. **Debris Removal** – complete
2. **Mape Memorial Park Pathway Relocation** – construction
3. **Dougherty Hills Open Space at Crossridge Slide Repair** – construction begin July 2025
4. **Dublin Boulevard, west of Silvergate, Slide Repair** – construction begin July 2025
5. **Koopman Canyon Creek at Shannon Comm Center/Park** – design
6. **Martin Canyon Creek at Silvergate** – preliminary engineering complete
7. **Clark Canyon Creek at Padre Way** – preliminary engineering complete
8. **Koopman Canyon Creek at Fenwick Court** – preliminary engineering complete, EBRPD cooperation





**Thank You**

