

# **Item 4.A**

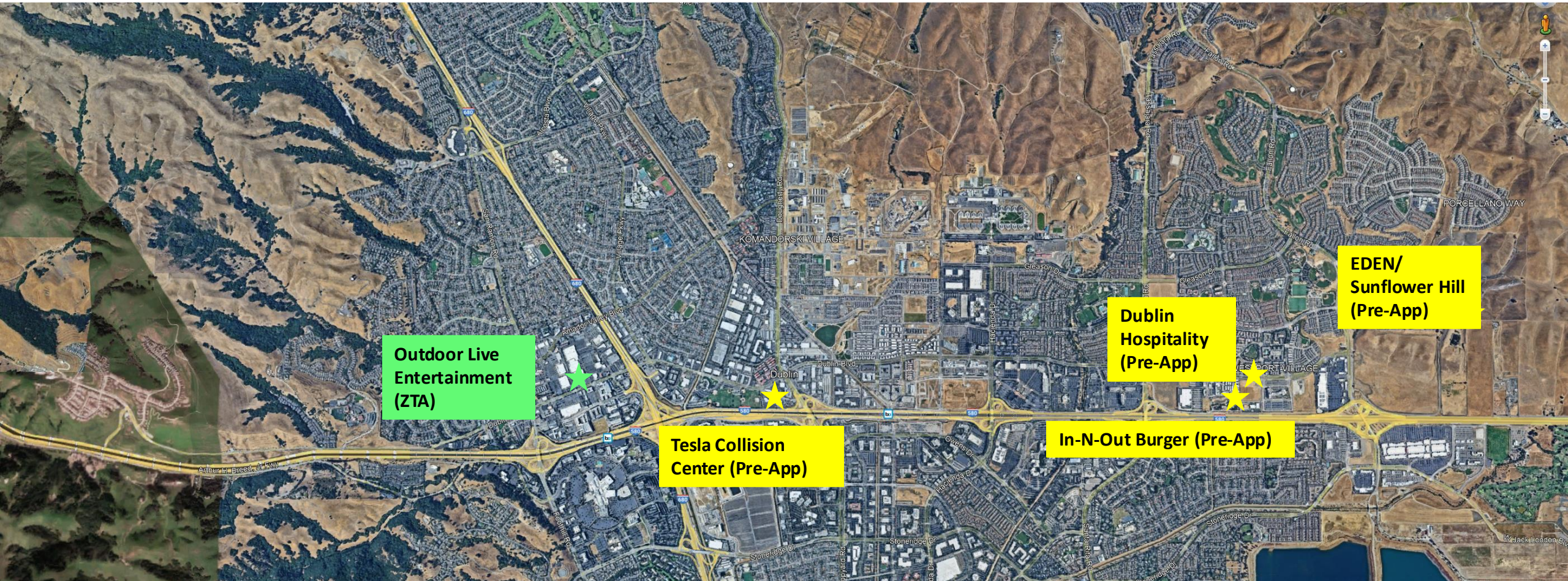
## **Development Projects Update**

November 3, 2025





# Development Projects



**Outdoor Live  
Entertainment  
(ZTA)**

**Tesla Collision  
Center (Pre-App)**

**Dublin  
Hospitality  
(Pre-App)**

**In-N-Out Burger (Pre-App)**

**EDEN/  
Sunflower Hill  
(Pre-App)**





# Outdoor Live Entertainment

---

- Amendment to Downtown Dublin Specific Plan and Dublin Municipal Code
- Outdoor Live Entertain – NEW land use
- Limited to:
  - Downtown (Downtown Dublin Specific Plan Area)
  - Eating and Drinking Establishments
  - Outdoor Dining Areas



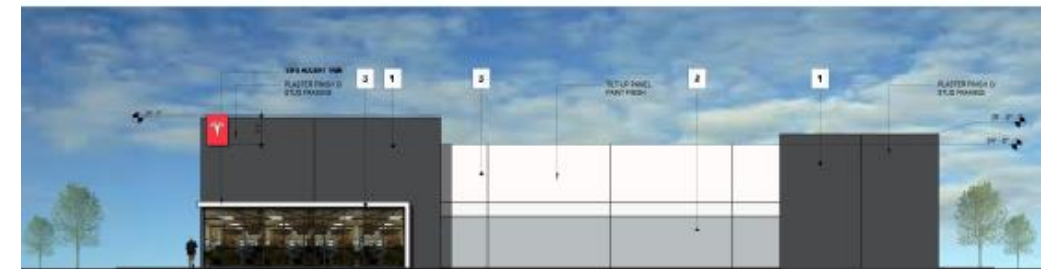
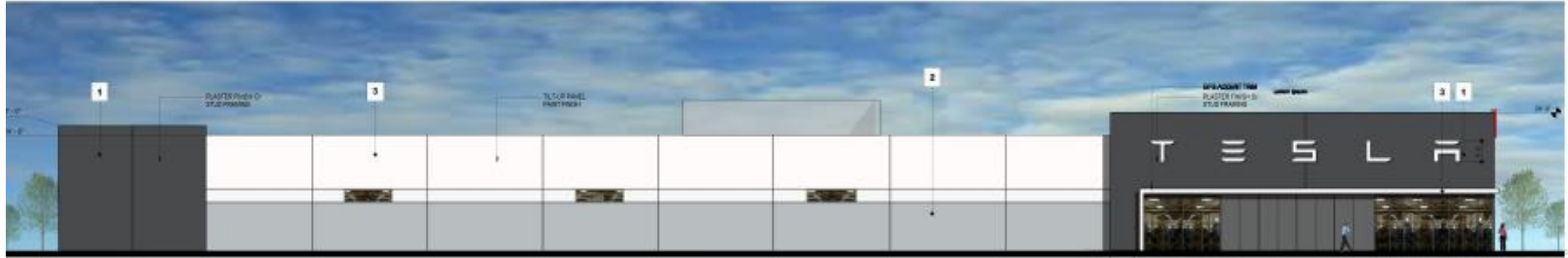
# Tesla Collision Center (Pre-App)

---

- Future Project (SDR)
- Demolition of Former Nissan Dealership
- Auto Repair
- 42,000 SF
- 241 Parking Spaces



# Tesla Collision Center (Pre-App)



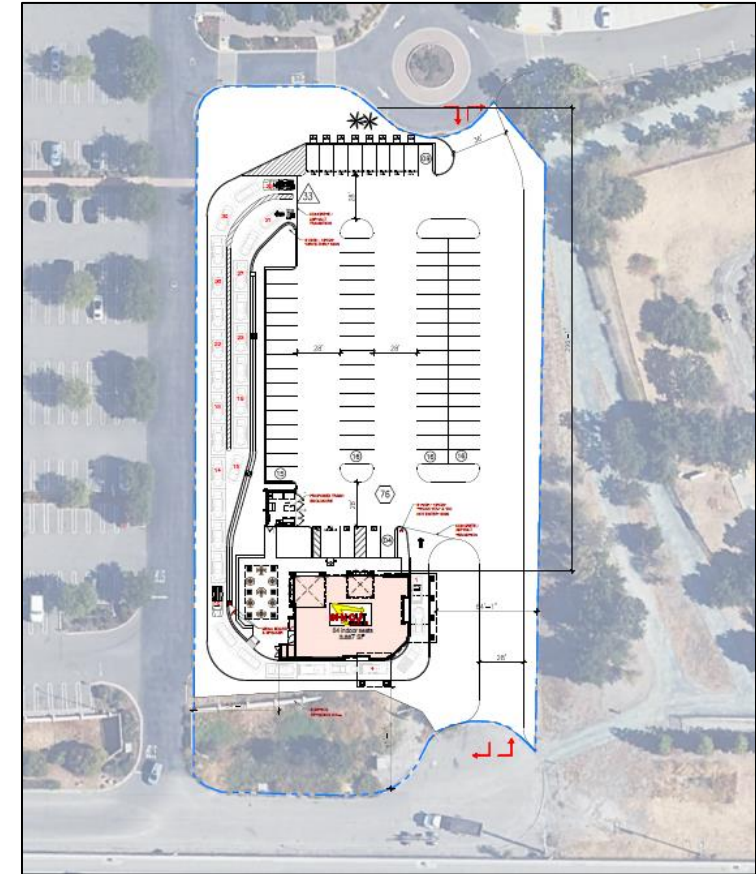
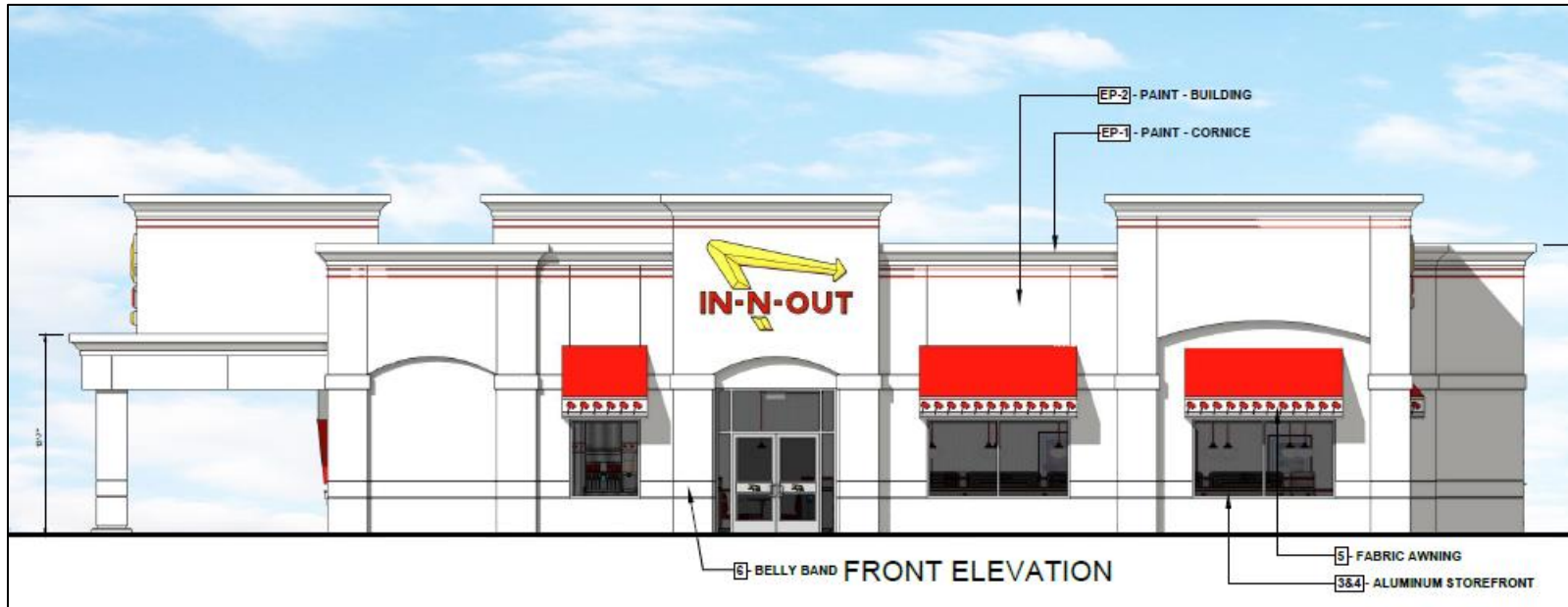
# In-N-Out Burger (Pre-App)

- Future Project (SDR & CUP)
- 4020 Grafton Street
- 3,887 SF
  - Patio
  - Drive - Though





# In-N-Out Burger (Pre-App)



# Dublin Hospitality (Pre-App)

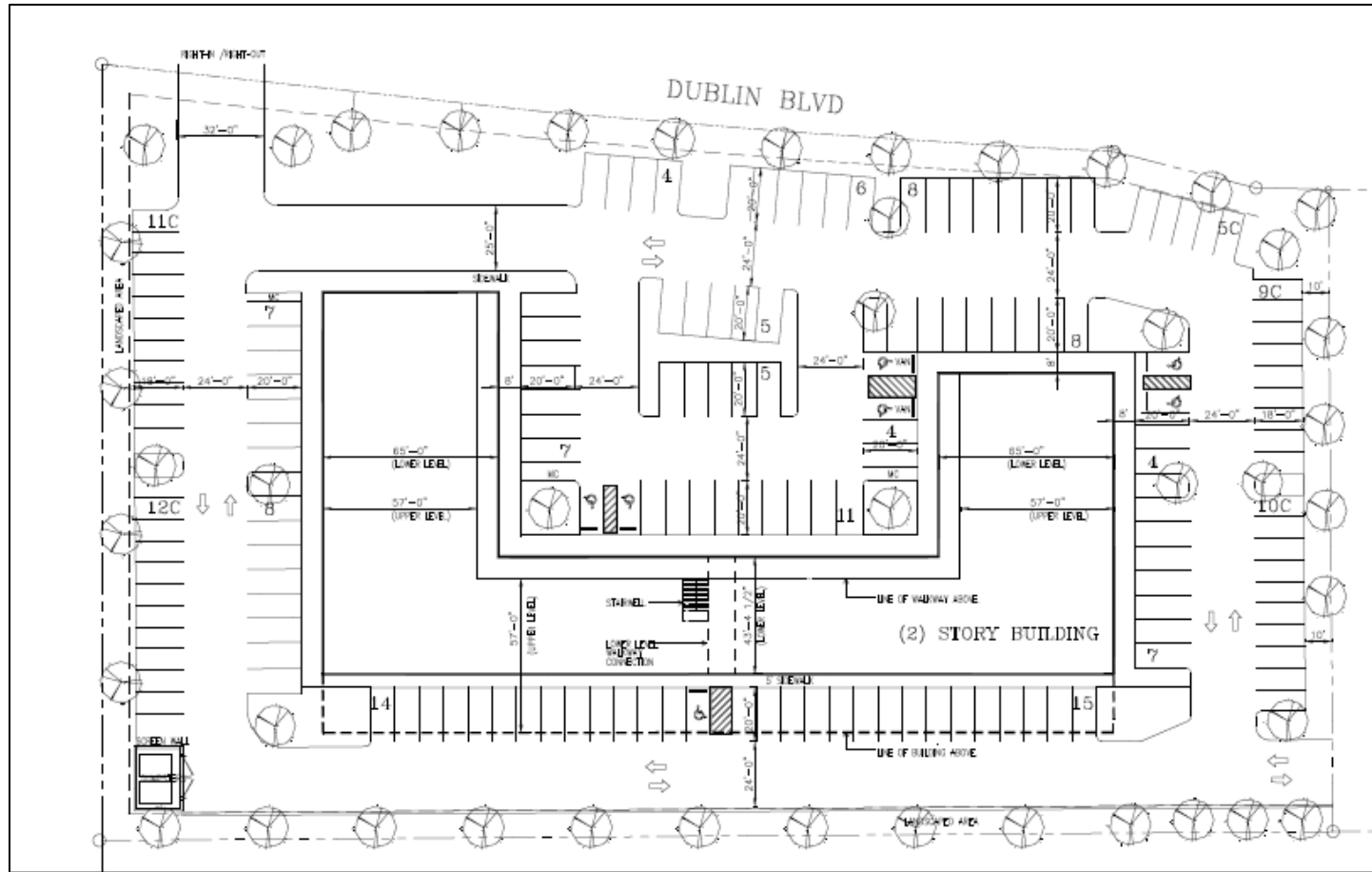
---

- Future Project (SDR)
- Kaiser Commercial Site
- 48,700 SF
  - 23,160 SF Retail (1<sup>st</sup> Floor)
  - 35,540 SF Retail and Meeting Space (2<sup>nd</sup> Floor)
- 163 Parking Spaces





# Dublin Hospitality (Pre-App)



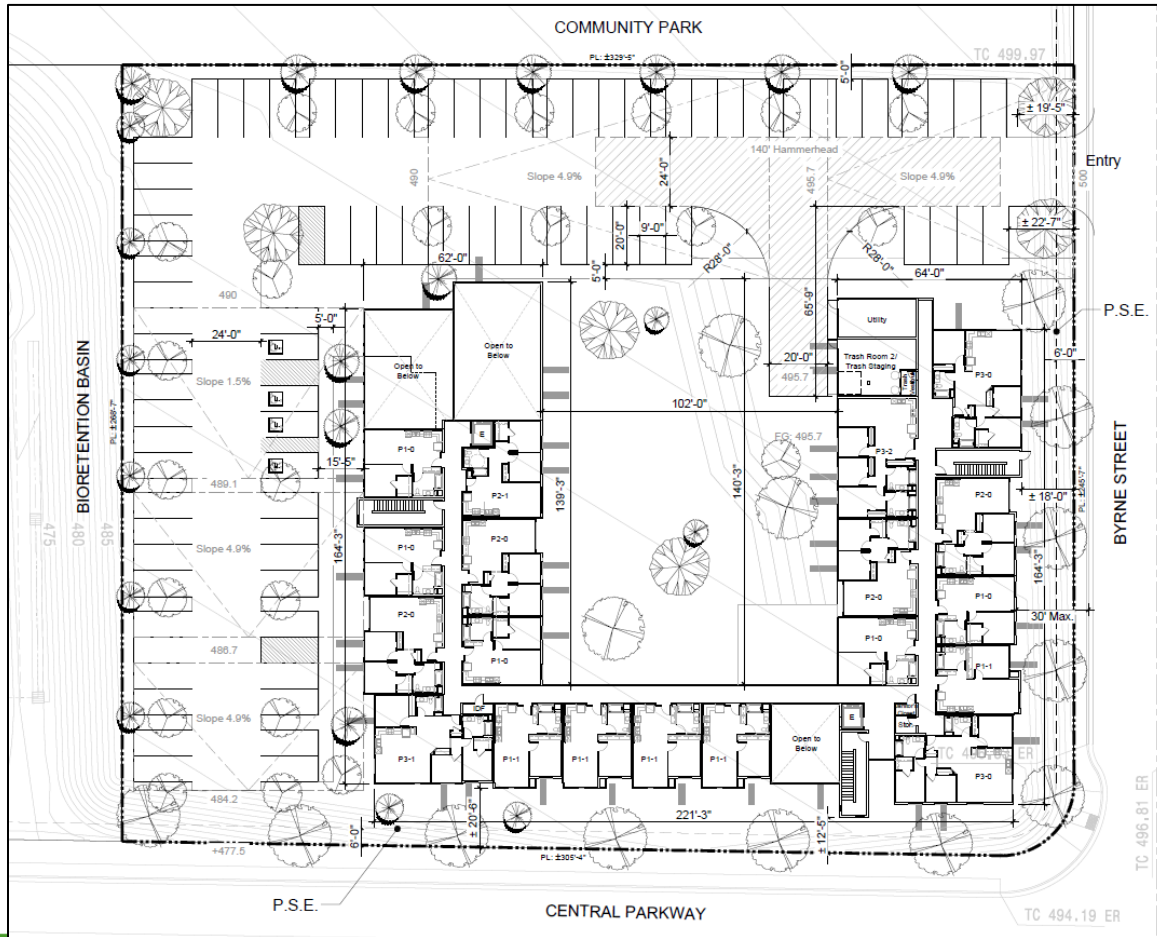
# EDEN/Sunflower Hill (Pre-App)

- Future Project (SDR and PD)
- 93 Units
- Very Low and Low Income (EDEN)
- 25% Intellectual and Developmentally Disabled (Sunflower Hill)





# EDEN/Sunflower Hill (Pre-App)







# Item 4.A

## City Capital Projects Update

November 3, 2025



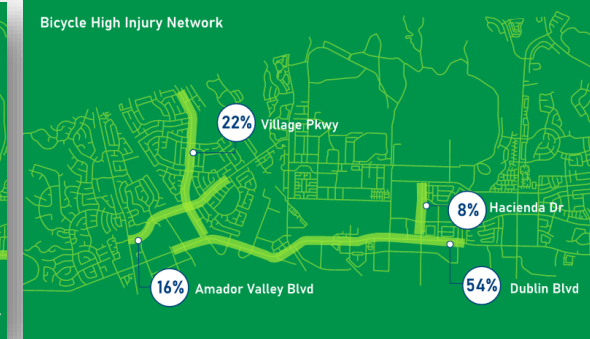
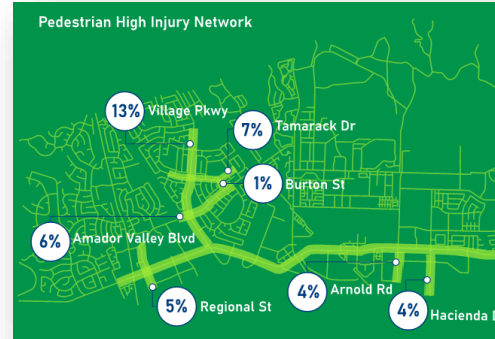
# Village Parkway Complete Streets

## 1-Improve Pavement

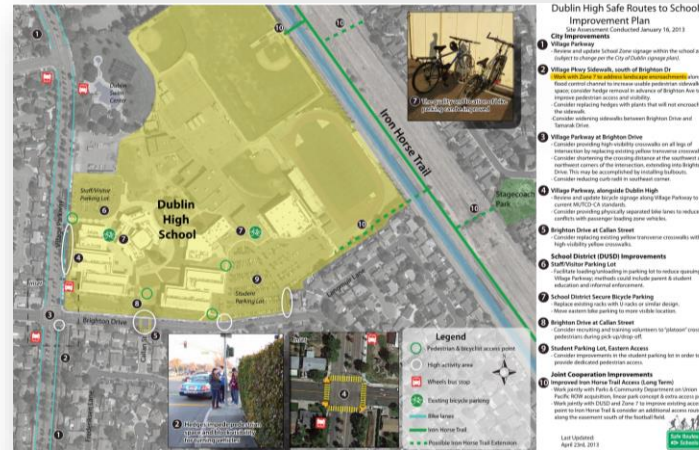


**Rideability and Walkability**

## 2-Improve Safety for All Users



## 3-Improve School Access



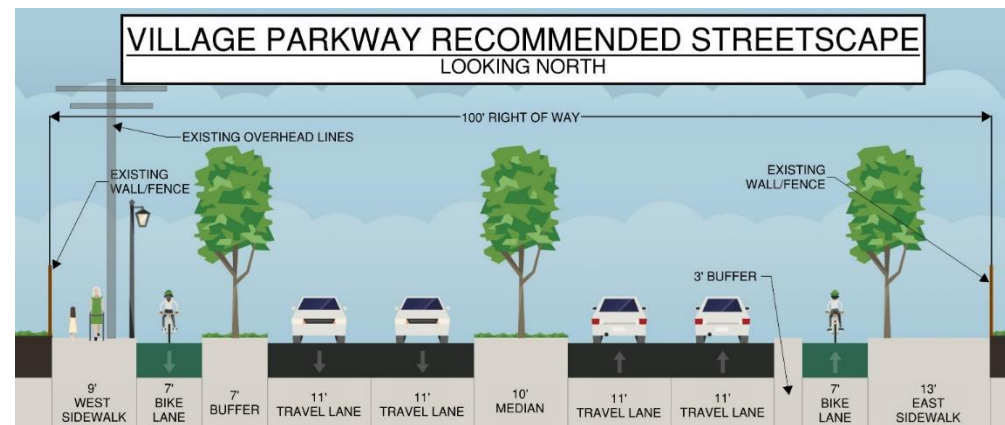
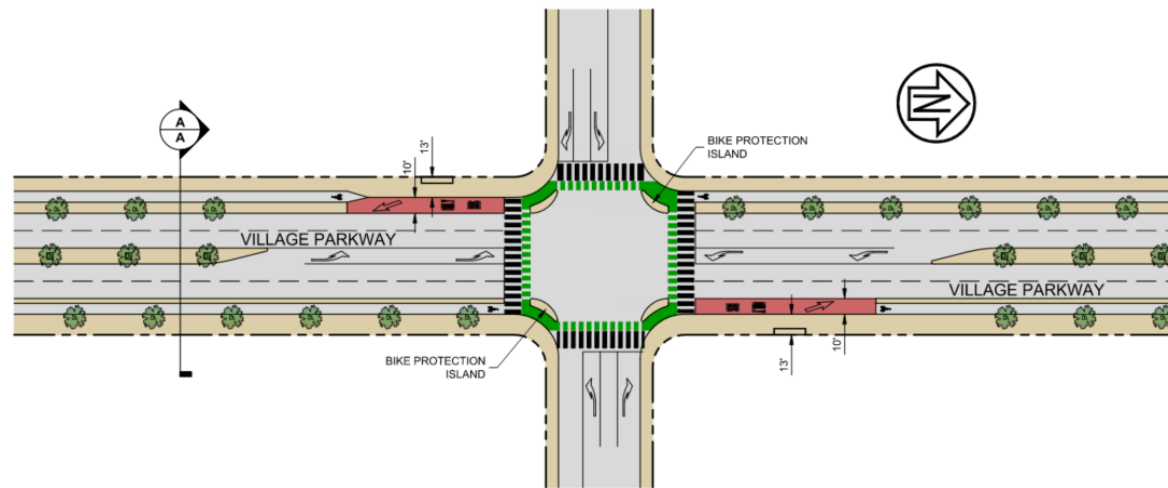
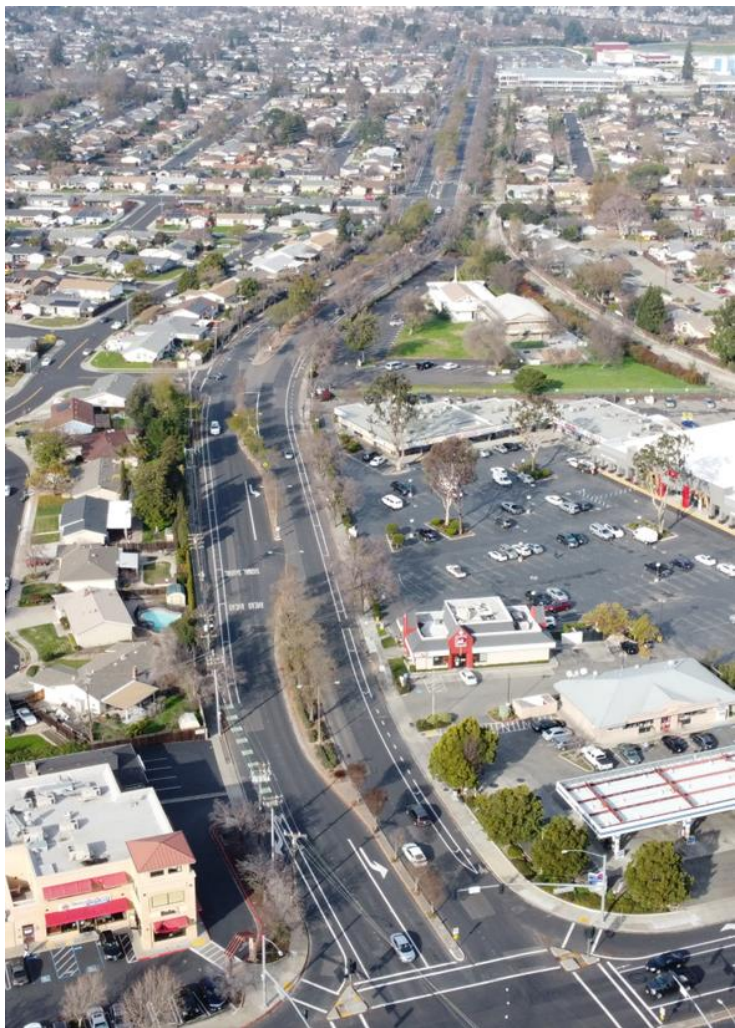
**Transit Enhancements**

## 4-Support Downtown Specific Plan





# Village Parkway Complete Streets



# Irrigation System Upgrade

- 60+ Controller upgrade
- Site-specific irrigation schedules for the 25 largest sites.
- \$1.38M State Water Resources Grant Funded





# Forest Park Neighborhood Square





# Wallis Ranch Community Park



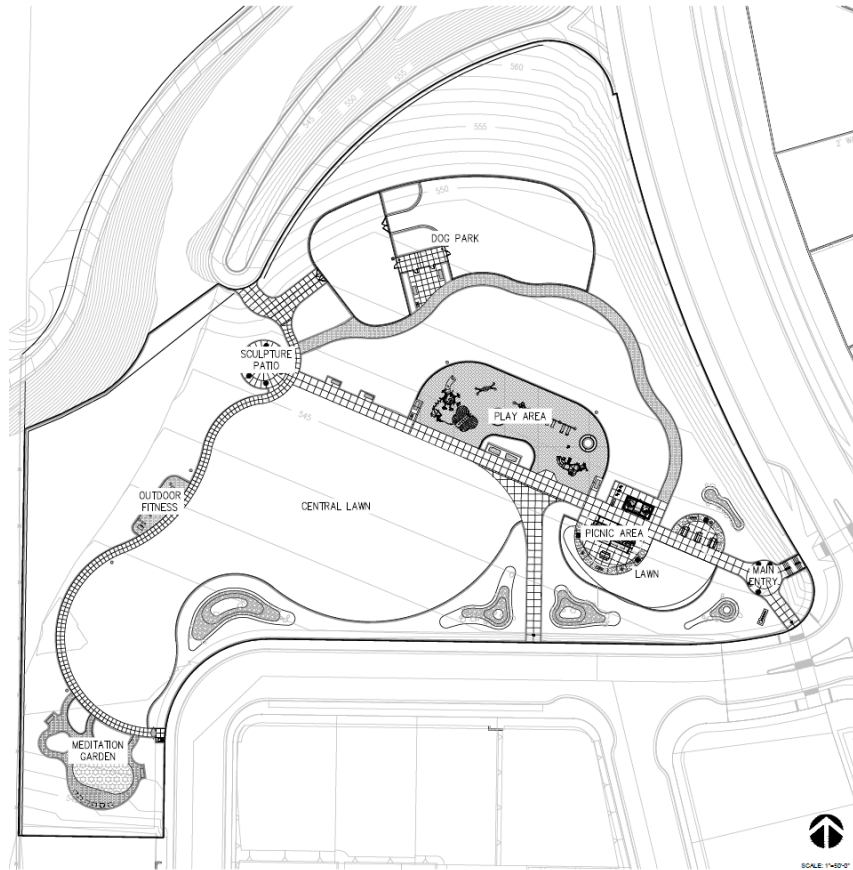


# Iron Horse Nature Park & Open Space Phase I and Green Stormwater Infrastructure Projects

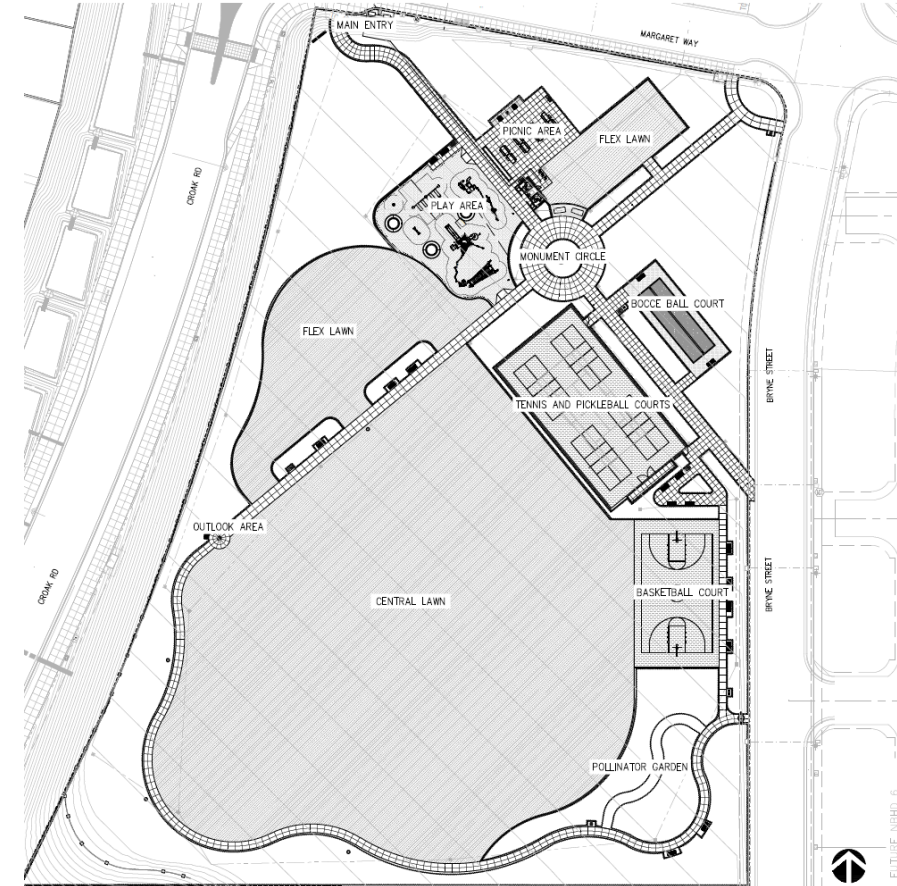




# Francis Ranch Parks



Northern Park

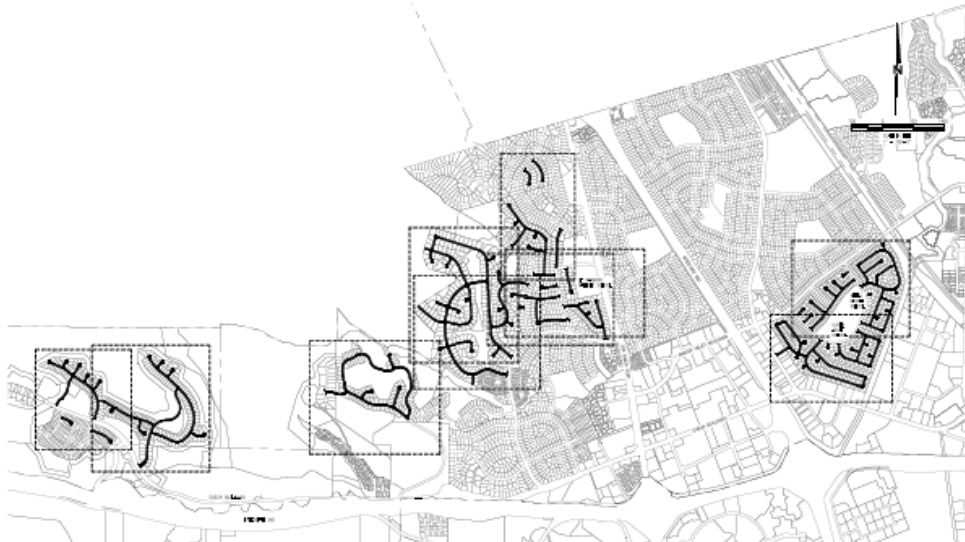


Southern Park





# Annual Street Resurfacing



Kelly Canyon/Reimers

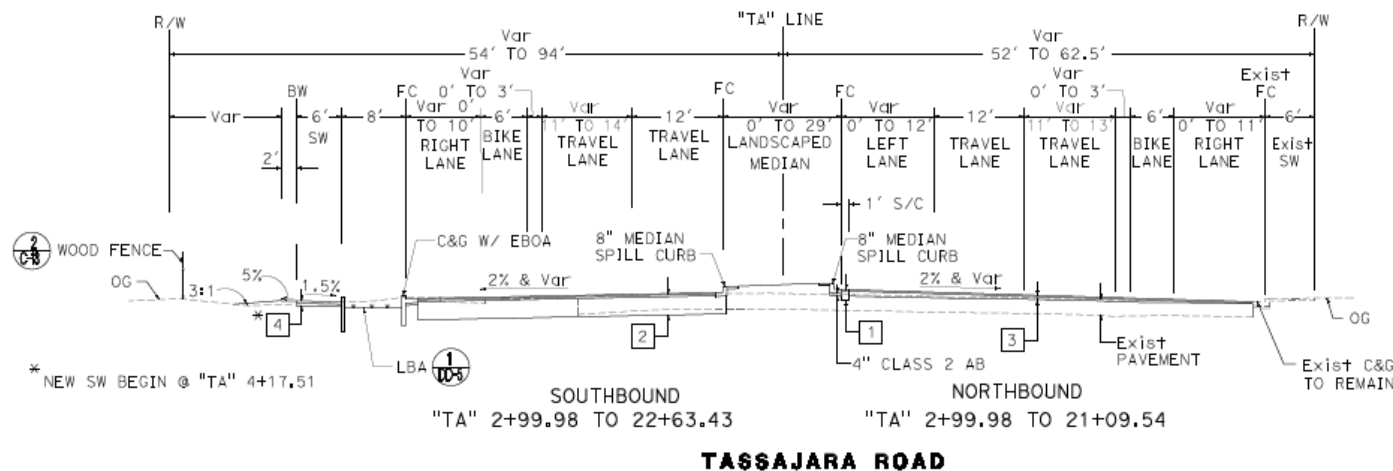




# North Dublin Ranch Drive to Quarry Lane School



- 0.6-mile length of roadway
- Conform to existing improvements
- 2 lanes in each direction
- Bike Lanes
- Sidewalk
- Landscaping / Bio Retention
- Street Lighting
- Utilities



# Dublin Boulevard Extension



- 1.5 Mile Extension
- 6 lanes in Dublin
- 4 lanes in Livermore
- Bus Turnouts
- Landscaped Median Islands
- Class IV Bikeways
- Shared use Path
- Sidewalk & Landscaping
- Street Lighting





# 2022/2023 Storm Damage Repair Projects



New Years Eve  
2022 2:37pm



Typical Day





# Current Status of Repair

1. **Debris Removal** – complete
2. **Mape Memorial Park Pathway Relocation** – construction substantially complete
3. **Dougherty Hills Open Space at Crossridge Slide Repair** – construction substantially complete
4. **Dublin Boulevard, west of Silvergate, Slide Repair** – construction substantially complete
5. **Koopman Canyon Creek at Shannon Comm Center/Park** – design/permitting
6. **Martin Canyon Creek at Silvergate** – design/permitting
7. **Clark Canyon Creek at Padre Way** – design/permitting
8. **Koopman Canyon Creek at Fenwick Court** – design/permitting





**Thank You**

